

PRICE BOOK 2026

MACHINES AND ACCESSORIES
INTERNATIONAL



BRIVILOR
BONAMAT

Brewing
your coffee
SINCE 1948

bravilor.com



Freshbrew Machines

- 18 - FreshGround
- 19 - FreshMore



Espresso Machines

- 5 - Esprecious
- 7 - Sego
- 8 - SPRSO



Instant Machines

- 10 - Solo
- 10 - Bolero
- 12 - Bolero Turbo

Filter Machines

- 21 - Mondo-series
- 22 - Matic-series
- 23 - Novo
- 24 - Quick filter marine
- 24 - Iso
- 25 - RLX



- 26 - B-series
- 29 - B HW-series
- 31 - B-series wall
- 33 - B HW-series wall
- 34 - B-series marine
- 36 - Containers
- 40 - Containers marine
- 41 - Percolators

Hot Water/Milk Machines

- 43 - HWA-series
- 45 - HM/HCM-series



Accessories

- 47 - Cabinets
- 47 - Cup heaters
- 47 - Descale- and cleaningproducts
- 49 - Drip-trays & pedestals
- 54 - Filter pans
- 56 - Filter papers
- 58 - Filter systems
- 59 - Milk fridges & coolers
- 59 - Payment systems
- 60 - Round filter accessories
- 64 - Vacuum flasks & airpots
- 67 - Waste bins
- 68 - Hot plates
- 68 - Other accessories



- 71 - General Terms and Conditions

Espresso Machines

ESPRECIOUS | SEGO | SPRSO



Esprecious

Reliability, convenience and consistent in-cup quality are essential in today's coffee business. The all-new Esprecious is the high performance answer to these modern challenges, meeting customer expectations with ease due to its innovative features. Welcome your guests with an authentic espresso at the touch of a button.



Esprecious 11L

Equipped with 1 grinder, 1 bean canister and 1 canister for instant ingredients. Range of hot beverages dependent on the choice of instant ingredient. Fresh milk supply through FreshMilk unit only. Includes milk container.
Please note: FreshMilk unit needs to be ordered separately.

Dimensions (WxDxH)
352x568x660mm
Rated power
230V~50/60Hz 2250W

Article number
8.035.230.31002
Price
€6.603,00

Recommended usage:	Up to 120
Throughput per hour coffee:	30 L
Coffee bean canisters:	1 x 1.4 kg
Instant canisters:	1 x 3.2 L
Mixing units:	1
Fresh milk compatible:	Yes
Water connection:	Yes



Esprecious 21L

Equipped with 2 grinders, 1 divided bean canister and 1 canister for instant ingredients. Range of hot beverages dependent on the choice of instant ingredient. Fresh milk supply through FreshMilk unit only. Includes milk container.
Please note: FreshMilk unit needs to be ordered separately.

Dimensions (WxDxH)
352x568x660mm
Rated power
230V~50/60Hz 2250W

Article number
8.035.240.31002
Price
€6.809,00

Recommended usage:	Up to 120
Throughput per hour coffee:	30 L
Coffee bean canisters:	2 x 0.7 kg
Instant canisters:	1 x 3.2 L
Mixing units:	1
Fresh milk compatible:	Yes
Water connection:	Yes



FreshMilk 3.0

Unit for fresh milk supply. Developed to operate with Esprecious 11L & 21L. Cooling system keeps milk cartons at constant temperature.
Please note: FreshMilk does not operate as standalone unit. Water pressure must be above 2 bar.

Dimensions (WxDxH)
240x460x630mm
Rated power
230V~50/60Hz 1650W

Article number
8.060.300.33001
Price
€3.272,00

Holding capacity:	6x 1 L
Water connection:	Yes



Esprecious 11

Equipped with 1 grinder, 1 bean canister and 1 canister for instant ingredients. Range of hot beverages dependent on the choice of instant ingredient.

Dimensions (WxDxH)	Article number
352x568x660mm	8.035.270.31002
Rated power	Price
230V~ 50/60Hz 2250W	€5.983,00

Recommended usage:	Up to 120
Throughput per hour coffee:	30 L
Coffee bean canisters:	1 x 1.4 kg
Instant canisters:	1 x 3.2 L
Mixing units:	1
Fresh milk compatible:	No
Water connection:	Yes



Esprecious 12

Equipped with 1 grinder, 1 bean canister and 2 canisters for instant ingredients. Range of hot beverages dependent on the choice of instant ingredients.

Dimensions (WxDxH)	Article number
352x568x660mm	8.035.290.31002
Rated power	Price
230V~ 50/60Hz 2250W	€6.190,00

Recommended usage:	Up to 120
Throughput per hour coffee:	30 L
Coffee bean canisters:	1 x 1.4 kg
Instant canisters:	2 x 1.3 L
Mixing units:	1
Fresh milk compatible:	No
Water connection:	Yes



Esprecious 22

Equipped with 2 grinders, 1 divided bean canister and 2 canisters for instant ingredients. Range of hot beverages dependent on the choice of instant ingredients.

Dimensions (WxDxH)	Article number
352x568x660mm	8.035.300.31002
Rated power	Price
230V~ 50/60Hz 2250W	€6.706,00

Recommended usage:	Up to 120
Throughput per hour coffee:	30 L
Coffee bean canisters:	2 x 0.7 kg
Instant canisters:	2 x 1.3 L
Mixing units:	1
Fresh milk compatible:	No
Water connection:	Yes

Sego

With its compact design and easy operation, the Sego keeps workplaces running smoothly while delivering consistently great coffee throughout the day. By using fresh beans, the Sego ensures a rich, flavorful cup every time.



Sego 11L

Equipped with 1 grinder, 1 bean canister and 1 canister for instant ingredient. Integrated milk system (steam boiler and milk frother) for the fresh milk. Choice of beverages depends on the instant ingredient. **Please note: Sego milk fridge must be ordered separately.**

Dimensions (WxDxH)	Article number
325x535x590mm	8.036.070.32001
Rated power	Price
230V~ 50/60Hz 2190W	€4.947,00

Recommended usage:	Up to 60
Coffee bean canisters:	1 x 1.2 kg
Instant canisters:	1 x 3.2 L
Mixing units:	1
Fresh milk compatible:	Yes
Water connection:	Yes



Sego 12L

Equipped with 1 grinder, 1 bean canister and 2 canisters for instant ingredients. Integrated milk system (steam boiler and milk frother) for the fresh milk. Choice of beverages depends on the instant ingredients. **Please note: Sego milk fridge must be ordered separately.**

Dimensions (WxDxH)	Article number
325x535x590mm	8.036.050.32001
Rated power	Price
230V~ 50/60Hz 2190W	€5.196,00

Recommended usage:	Up to 60
Coffee bean canisters:	1 x 1.2 kg
Instant canisters:	2 x 1.3 L
Mixing units:	1
Fresh milk compatible:	Yes
Water connection:	Yes



Milk fridge

Fridge for use with Sego 11L/12L. Chills and keeps milk at the right temperature. **Holding capacity: 4 L.**

Dimensions (WxDxH)	Article number
220x455x455mm	7.270.633.101
Rated power	Price
230V~ 50/60Hz 115W	€568,10

Holding capacity:	4 L
-------------------	-----



Sego 12

Equipped with 1 grinder, 1 bean canister and 2 canisters for instant ingredients. Range of hot beverages dependent on the choice of instant ingredients.

Dimensions (WxDxH) 315x450x590mm	Article number 8.036.010.32001
Rated power 230V~ 50/60Hz 2190W	Price €3.822,00

Recommended usage:	Up to 60
Coffee bean canisters:	1 x 1.2 kg
Instant canisters:	2 x 1.3 L
Mixing units:	1
Fresh milk compatible:	No
Water connection:	Yes

SPRSO

This stunning compact machine delivers a coffee shop experience to every office, business environment, board room, or hospitality area. If you value your coffee as much as your hospitality, you serve your guests the perfect cup of espresso or ristretto with the SPRSO.



SPRSO

Equipped with 1 grinder and 1 bean canister. SPRSO offers ristretto, espresso, crema coffee, americano and hot water.

Dimensions (WxDxH) 215x440x420mm	Article number 8.038.010.31002
Rated power 220-240V~ 50/60Hz 1840W	Price €1.300,00

Recommended usage:	Up to 30
Coffee bean canisters:	1 x 300 g
Water connection:	No
Watertank:	2.2 litres

Instant Machines

SOLO | BOLERO | BOLERO TURBO



Solo

A refined hot chocolate dispenser. At the touch of a button, rich hot chocolate is served directly into your cup, with customizable water and cocoa settings to perfectly match your preferred portion.



Solo

Equipped with 1 canister. For hot chocolate.

Dimensions (WxDxH)	Article number
170x385x512mm	8.020.060.31002
Rated power	Price
230V~ 50/60Hz 2100W	€929,00

Recommended usage:	Up to 100
Throughput per hour coffee:	20 L
Instant canisters:	1 x 3.2 L
Mixing units:	1
Water connection:	Yes

Bolero

When speed and efficiency are deciding factors, the Bolero is the perfect solution for serving coffee specialties, hot chocolate and tea. We have variants with up to 4 canisters so you can offer a wide range of hot drinks, making the tabletop Bolero the perfect solution for any self-service environment.



Bolero 11

Equipped with 1 canister. For coffee or hot chocolate.

Dimensions (WxDxH)	Article number
190x440x590mm	8.020.330.31002
Rated power	Price
230V~ 50/60Hz 2230W	€1.231,00

Recommended usage:	Up to 160
Throughput per hour coffee:	30 L
Instant canisters:	1 x 3.2 L
Mixing units:	1
Simultaneous dispensing:	No
Water connection:	Yes



Bolero 11 (Without hot water)

Equipped with 1 instant canister. For coffee or hot chocolate. Without hot water tap.

Dimensions (WxDxH)	Article number
190x440x590mm	8.020.390.31002
Rated power	Price
230V~ 50/60Hz 2230W	€1.231,00

Recommended usage:	Up to 160
Throughput per hour coffee:	30 L
Instant canisters:	1 x 3.2 L
Mixing units:	1
Simultaneous dispensing:	No
Water connection:	Yes



Bolero 11 3kW

Equipped with 1 canister for coffee or chocolate. Excluding elevation table. Instant ingredient dispenser, especially suitable for large doses.

Dimensions (WxDxH)	Article number
190x440x590mm	8.020.410.31002
Rated power	Price
230V~ 50/60Hz 3100W	€1.565,00

Recommended usage:	Up to 160
Throughput per hour coffee:	36 L
Instant canisters:	1 x 3.2 L
Mixing units:	1
Simultaneous dispensing:	No
Water connection:	Yes



Bolero 21

Equipped with 2 canisters for 3 hot beverages and hot water.

Dimensions (WxDxH)	Article number
190x440x590mm	8.020.340.31002
Rated power	Price
230V~ 50/60Hz 2230W	€1.479,00

Recommended usage:	Up to 160
Throughput per hour coffee:	30 L
Instant canisters:	2 x 1.3 L
Mixing units:	1
Simultaneous dispensing:	No
Water connection:	Yes



Bolero 21 3kW

Equipped with 2 canisters for 3 hot drinks and hot water. Excluding elevation table. Instant ingredient dispenser, especially suitable for large doses.

Dimensions (WxDxH)	Article number
190x440x590mm	8.020.420.31002
Rated power	Price
230V~ 50/60Hz 3100W	€1.814,00

Recommended usage:	Up to 160
Throughput per hour coffee:	36 L
Instant canisters:	2 x 1.3 L
Mixing units:	1
Simultaneous dispensing:	No
Water connection:	Yes



Bolero 32

Equipped with 3 canisters for max. 36 hot beverages including hot water.

Dimensions (WxDxH)	Article number
315x440x590mm	8.020.350.31002
Rated power	Price
230V~ 50/60Hz 2230W	€2.221,00

Recommended usage:	Up to 160
Throughput per hour coffee:	30 L
Instant canisters:	1 x 3.2 L + 2 x 1.3 L
Mixing units:	2
Simultaneous dispensing:	No
Water connection:	Yes



Bolero 32 CS

Equipped with a built-in cup detection system and 3 canisters for max. 36 hot beverages including hot water.

Dimensions (WxDxH)	Article number
315x440x590mm	8.020.350.31012
Rated power	Price
230V~ 50/60Hz 2230W	€2.453,00

Recommended usage:	Up to 160
Throughput per hour coffee:	30 L
Instant canisters:	1 x 3.2 L + 2 x 1.3 L
Mixing units:	2
Simultaneous dispensing:	No
Water connection:	Yes



Bolero 43

Equipped with 4 canisters for max. 36 hot beverages including hot water.

Dimensions (WxDxH)	Article number
315x440x590mm	8.020.360.31002
Rated power	Price
230V~ 50/60Hz 2230W	€2.469,00

Recommended usage:	Up to 160
Throughput per hour coffee:	30 L
Instant canisters:	4 x 1.3 L
Mixing units:	3
Simultaneous dispensing:	No
Water connection:	Yes



Bolero Turbo 33

Equipped with 3 canisters for max. 36 hot beverages including hot water.

Dimensions (WxDxH)	Article number
326x504x845mm	8.020.460.31009
Rated power	Price
230V~ 50/60Hz 3500W	€3.196,00

Recommended usage:	Up to 650
Throughput per hour coffee:	44 L
Instant canisters:	1 x 5.3 L + 2 x 2.4 L
Mixing units:	3
Simultaneous dispensing:	Yes
Water connection:	Yes



Bolero 43 CS

Equipped with cup detection and 4 canisters for max. 36 hot beverages including hot water.

Dimensions (WxDxH)	Article number
315x440x590mm	8.020.360.31012
Rated power	Price
230V~ 50/60Hz 2230W	€2.701,00

Recommended usage:	Up to 160
Throughput per hour coffee:	30 L
Instant canisters:	4 x 1.3 L
Mixing units:	3
Simultaneous dispensing:	No
Water connection:	Yes



Bolero Turbo 33 400V

Equipped with 3 canisters for max. 36 hot beverages including hot water.

Dimensions (WxDxH)	Article number
326x504x845mm	8.020.480.11009
Rated power	Price
400V 3N~ 50/60Hz 10500W	€3.609,00

Recommended usage:	Up to 650
Throughput per hour coffee:	104 L
Instant canisters:	1 x 5.3 L + 2 x 2.4 L
Mixing units:	3
Simultaneous dispensing:	Yes
Water connection:	Yes

Bolero Turbo

Certain locations simply require more capacity. A healthcare facility with lots of patients and visitors requires coffee around the clock. Or conference centres where attendees have coffee and tea served during peak moments need a coffee solution that is quick and reliable. In situations like these, operators worldwide opt for the high-capacity Bolero Turbo (XL) machines.



Bolero Turbo 33 SO

Equipped with 3 canisters for max. 36 hot beverages including hot water.

Dimensions (WxDxH)	Article number
326x504x845mm	8.020.500.31001
Rated power	Price
230V~ 50/60Hz 3500W	€3.196,00

Recommended usage:	Up to 650
Throughput per hour coffee:	44 L
Instant canisters:	1 x 5.3 L + 2 x 2.4 L
Mixing units:	3
Simultaneous dispensing:	No
Water connection:	Yes



Bolero Turbo 33 SO 400V

Equipped with 3 canisters for max. 36 hot beverages including hot water.

Dimensions (WxDxH)	Article number
326x504x845mm	8.020.520.11001
Rated power	Price
400V 3N~ 50/60Hz 10500W	€3.609,00

Recommended usage:	Up to 650
Throughput per hour coffee:	104 L
Instant canisters:	1 x 5.3 L + 2 x 2.4 L
Mixing units:	3
Simultaneous dispensing:	No
Water connection:	Yes



Bolero Turbo 43

Equipped with 4 canisters for max. 36 hot beverages including hot water.

Dimensions (WxDxH)	Article number
326x504x845mm	8.020.460.31010
Rated power	Price
230V~ 50/60Hz 3500W	€3.196,00

Recommended usage:	Up to 650
Throughput per hour coffee:	44 L
Instant canisters:	4 x 2.4 L
Mixing units:	3
Simultaneous dispensing:	Yes
Water connection:	Yes



Bolero Turbo 22

Equipped with 2 canisters for max. 36 hot beverages including hot water.

Dimensions (WxDxH)	Article number
326x504x845mm	8.020.460.31008
Rated power	Price
230V~ 50/60Hz 3500W	€3.196,00

Recommended usage:	Up to 650
Throughput per hour coffee:	44 L
Instant canisters:	2 x 5.3 L
Mixing units:	2
Simultaneous dispensing:	Yes
Water connection:	Yes



Bolero Turbo 22 400V

Equipped with 2 canisters for max. 36 hot beverages including hot water.

Dimensions (WxDxH)	Article number
326x504x845mm	8.020.480.11001
Rated power	Price
400V 3N~ 50/60Hz 10500W	€3.609,00

Recommended usage:	Up to 650
Throughput per hour coffee:	104 L
Instant canisters:	2 x 5.3 L
Mixing units:	2
Simultaneous dispensing:	Yes
Water connection:	Yes



Bolero Turbo 43 400V

Equipped with 4 canisters for max. 36 hot beverages including hot water.

Dimensions (WxDxH)	Article number
326x504x845mm	8.020.480.11008
Rated power	Price
400V 3N~ 50/60Hz 10500W	€3.609,00

Recommended usage:	Up to 650
Throughput per hour coffee:	104 L
Instant canisters:	4 x 2.4 L
Mixing units:	3
Simultaneous dispensing:	Yes
Water connection:	Yes



Bolero Turbo 44

Equipped with 4 canisters for max. 36 hot beverages including hot water.

Dimensions (WxDxH)	Article number
326x504x845mm	8.020.460.31001
Rated power	Price
230V~ 50/60Hz 3500W	€3.196,00

Recommended usage:	Up to 650
Throughput per hour coffee:	44 L
Instant canisters:	4 x 2.4 L
Mixing units:	4
Simultaneous dispensing:	Yes
Water connection:	Yes



Bolero Turbo 44 400V

Equipped with 4 canisters for max. 36 hot beverages including hot water.

Dimensions (WxDxH)	Article number
326x504x845mm	8.020.480.11010
Rated power	Price
400V 3N~ 50/60Hz 10500W	€3.609,00

Recommended usage:	Up to 650
Throughput per hour coffee:	104 L
Instant canisters:	4 x 2.4 L
Mixing units:	4
Simultaneous dispensing:	Yes
Water connection:	Yes



Bolero Turbo XL 33

Equipped with 3 canisters for max. 36 hot beverages including hot water.

Dimensions (WxDxH)	Article number
464x504x845mm	8.020.470.31011
Rated power	Price
230V~ 50/60Hz 3500W	€3.474,00

Recommended usage:	Up to 650
Throughput per hour coffee:	44 L
Instant canisters:	3 x 5.3 L
Mixing units:	3
Simultaneous dispensing:	Yes
Water connection:	Yes



Bolero Turbo XL 33 400V

Equipped with 3 canisters for max. 36 hot beverages including hot water.

Dimensions (WxDxH)	Article number
464x504x845mm	8.020.490.11010
Rated power	Price
400V 3N~ 50/60Hz 10500W	€3.887,00

Recommended usage:	Up to 650
Throughput per hour coffee:	104 L
Instant canisters:	3 x 5.3 L
Mixing units:	3
Simultaneous dispensing:	Yes
Water connection:	Yes



Bolero Turbo XL 33 SO

Equipped with 3 canisters for max. 36 hot beverages including hot water.

Dimensions (WxDxH)	Article number
464x504x845mm	8.020.510.31001
Rated power	Price
230V~ 50/60Hz 3500W	€3.474,00

Recommended usage:	Up to 650
Throughput per hour coffee:	44 L
Instant canisters:	3 x 5.3 L
Mixing units:	3
Simultaneous dispensing:	No
Water connection:	Yes



Bolero Turbo XL 33 SO 400V

Equipped with 3 canisters for max. 36 hot beverages including hot water.

Dimensions (WxDxH)	Article number
464x504x845mm	8.020.530.11001
Rated power	Price
400V 3N~ 50/60Hz 10500W	€3.887,00

Recommended usage:	Up to 650
Throughput per hour coffee:	104 L
Instant canisters:	3 x 5.3 L
Mixing units:	3
Simultaneous dispensing:	No
Water connection:	Yes



Bolero Turbo XL 43

Equipped with 4 canisters for max. 36 hot beverages including hot water.

Dimensions (WxDxH)	Article number
464x504x845mm	8.020.470.31009
Rated power	Price
230V~ 50/60Hz 3500W	€3.474,00

Recommended usage:	Up to 650
Throughput per hour coffee:	44 L
Instant canisters:	2 x 5.3 L + 2 x 2.4 L
Mixing units:	3
Simultaneous dispensing:	Yes
Water connection:	Yes



Bolero Turbo XL 43 400V

Equipped with 4 canisters for max. 36 hot beverages including hot water.

Dimensions (WxDxH)	Article number
464x504x845mm	8.020.490.11008
Rated power	Price
400V 3N~ 50/60Hz 10500W	€3.887,00

Recommended usage:	Up to 650
Throughput per hour coffee:	104 L
Instant canisters:	2 x 5.3 L + 2 x 2.4 L
Mixing units:	3
Simultaneous dispensing:	Yes
Water connection:	Yes



Bolero Turbo XL 44

Equipped with 4 canisters for max. 36 hot beverages including hot water.

Dimensions (WxDxH)	Article number
464x504x845mm	8.020.470.31001
Rated power	Price
230V~ 50/60Hz 3500W	€3.474,00

Recommended usage:	Up to 650
Throughput per hour coffee:	44 L
Instant canisters:	2 x 5.3 L + 2 x 2.4 L
Mixing units:	4
Simultaneous dispensing:	Yes
Water connection:	Yes



Bolero Turbo XL 44 400V

Equipped with 4 canisters for max. 36 hot beverages including hot water.

Dimensions (WxDxH)	Article number
464x504x845mm	8.020.490.11011
Rated power	Price
400V 3N~ 50/60Hz 10500W	€3.887,00

Recommended usage:	Up to 650
Throughput per hour coffee:	104 L
Instant canisters:	2 x 5.3 L + 2 x 2.4 L
Mixing units:	4
Simultaneous dispensing:	Yes
Water connection:	Yes



Bolero Turbo XL 53

Equipped with 5 canisters for max. 36 hot beverages including hot water.

Dimensions (WxDxH)	Article number
464x504x845mm	8.020.470.31008
Rated power	Price
230V~ 50/60Hz 3500W	€3.474,00

Recommended usage:	Up to 650
Throughput per hour coffee:	44 L
Instant canisters:	1 x 5.3 L + 4 x 2.4 L
Mixing units:	3
Simultaneous dispensing:	Yes
Water connection:	Yes



Bolero Turbo XL 53 400V

Equipped with 5 canisters for max. 36 hot beverages including hot water.

Dimensions (WxDxH)	Article number
464x504x845mm	8.020.490.11009
Rated power	Price
400V 3N~ 50/60Hz 10500W	€3.887,00

Recommended usage:	Up to 650
Throughput per hour coffee:	104 L
Instant canisters:	1 x 5.3 L + 4 x 2.4 L
Mixing units:	3
Simultaneous dispensing:	Yes
Water connection:	Yes



Bolero Turbo XL 64

Equipped with 6 canisters for max. 36 hot beverages including hot water.

Dimensions (WxDxH)	Article number
464x504x845mm	8.020.470.31010
Rated power	Price
230V~ 50/60Hz 3500W	€3.474,00

Recommended usage:	Up to 650
Throughput per hour coffee:	44 L
Instant canisters:	6 x 2.4 L
Mixing units:	4
Simultaneous dispensing:	Yes
Water connection:	Yes



Bolero Turbo XL 64 400V

Equipped with 6 canisters for max. 36 hot beverages including hot water.

Dimensions (WxDxH)	Article number
464x504x845mm	8.020.490.11001
Rated power	Price
400V 3N~ 50/60Hz 10500W	€3.887,00

Recommended usage:	Up to 650
Throughput per hour coffee:	104 L
Instant canisters:	6 x 2.4 L
Mixing units:	4
Simultaneous dispensing:	Yes
Water connection:	Yes

Freshbrew Machines

FRESHGROUND | FRESHMORE



FreshGround

The FreshGround takes coffee preparation to the next level with its integrated grinder, ensuring each cup is brewed from freshly ground beans. This delivers the ultimate freshness and rich, full-bodied flavor that coffee enthusiasts love.



FreshGround 100

Equipped with 1 canister for coffee.

Dimensions (WxDxH)	Article number
335x505x915mm	8.034.300.31005
Rated power	Price
220-240V 50/60Hz 2200W	€5.315,00

Recommended usage:	Up to 180
Throughput per hour:	18.75 L
Bean canisters:	1 x 2.4 kg
Water connection:	Yes



FreshGround 121

Equipped with 1 bean canister and 2 canisters for instant ingredients. For various types of beverages.

Dimensions (WxDxH)	Article number
335x505x915mm	8.034.310.31005
Rated power	Price
220-240V 50/60Hz 2300W	€5.799,00

Recommended usage:	Up to 180
Throughput per hour:	18.75 L
Bean canisters:	1 x 2.4 kg
Instant canisters:	2 x 1.3 L
Mixing units:	1
Water connection:	Yes



FreshGround 143

Equipped with 1 bean canister and 4 canisters for instant ingredients. For various types of beverages.

Dimensions (WxDxH)	Article number
477x505x915mm	8.034.500.31005
Rated power	Price
220-240V 50/60Hz 2300W	€6.013,00

Recommended usage:	Up to 180
Throughput per hour:	18.75 L
Bean canisters:	1 x 2.4 kg
Instant canisters:	4 x 1.3 L
Mixing units:	3
Water connection:	Yes

FreshMore

For those prioritizing speed and simplicity without sacrificing quality, the FreshMore is an ideal choice. Featuring a large canister for ground coffee, making it a practical solution for high-demand settings.



FreshMore 100

Equipped with 1 ground canister. For various types of beverages.

Dimensions (WxDxH)	Article number
335x505x800mm	8.033.100.31005
Rated power	Price
220-240V 50/60Hz 2200W	€4.403,00

Recommended usage:	Up to 180
Throughput per hour:	18.75 L
Ground coffee canisters:	1 x 3.2 L
Water connection:	Yes



FreshMore 121

Equipped with 1 ground canister and 2 canisters for instant ingredients. For various types of beverages.

Dimensions (WxDxH)	Article number
335x505x800mm	8.033.110.31005
Rated power	Price
220-240V 50/60Hz 2200W	€4.886,00

Recommended usage:	Up to 180
Throughput per hour:	18.75 L
Ground coffee canisters:	1 x 3.2 L
Instant canisters:	2 x 1.3 L
Mixing units:	1
Water connection:	Yes

Filter Machines

MONDO-SERIES | MATIC-SERIES | NOVO | QUICK FILTER MARINE
 ISO | RLX | B-SERIES | B HW-SERIES | B-SERIES WALL
 B HW-SERIES WALL | B-SERIES MARINE | CONTAINERS
 CONTAINERS MARINE | PERCOLATORS



Mondo-series

The Mondo is the definition of a classic. It has proven its quality and reliability over time and shown to be outstanding of its kind. Serving rich flavoured and aromatic filter coffee for generations. Place it anywhere. You don't even need a water connection.



Mondo

Equipped with 1 brewing system and 2 hot plates.

Dimensions (WxDxH)
195x406x446mm
Rated power
230V~ 50/60Hz 2140W

Article number
8.010.020.31002
Price
€538,00

Throughput per hour coffee (crème): 18 L
 Holding capacity coffee: 2 decanters (3.4 L)
 Brew time: 5 min. / 1 decanter



Mondo Twin

Equipped with 2 brewing systems and 4 hot plates.

Dimensions (WxDxH)
404x406x446mm
Rated power
230V~ 50/60Hz 3460W

Article number
8.010.030.31002
Price
€1.135,00

Throughput per hour coffee (crème): 28 L
 Holding capacity coffee: 4 decanters (6.8 L)
 Brew time: 6 min. / 2 decanters



Mondo Twin 400V

Equipped with 2 brewing systems and 4 hot plates.

Dimensions (WxDxH)
404x406x446mm
Rated power
400V 3N~ 50/60Hz 4280W

Article number
8.010.030.11002
Price
€1.135,00

Throughput per hour coffee (crème): 36 L
 Holding capacity coffee: 4 decanters (6.8 L)
 Brew time: 5 min. / 2 decanters

Matic-series

Simplicity, sophistication and speed is all about the Matic machine. The Matic makes serving coffee effortless, which is ideal for environment that values ease and style. No need to refill. The Matic connects directly to your water supply for seamless, uninterrupted brewing.



Matic

Equipped with 1 brewing system and 2 hot plates.

Dimensions (WxDxH) 195x406x446mm	Article number 8.010.050.31002
Rated power 230V~ 50/60Hz 2140W	Price €704,00

Throughput per hour coffee (crème):	15 L
Holding capacity coffee:	2 decanters (3.4 L)
Brew time:	6 min. / 1 decanter
Water connection:	Yes



Matic Twin

Equipped with 2 brewing systems and 4 hot plates.

Dimensions (WxDxH) 404x406x446mm	Article number 8.010.060.31002
Rated power 230V~ 50/60Hz 3460W	Price €1.455,00

Throughput per hour coffee (crème):	24 L
Holding capacity coffee:	4 decanters (6.8 L)
Brew time:	7 min. / 2 decanters
Water connection:	Yes



Matic Twin 400V

Equipped with 2 brewing systems and 4 hot plates.

Dimensions (WxDxH) 404x406x446mm	Article number 8.010.060.11002
Rated power 400V 3N~ 50/60Hz 4280W	Price €1.455,00

Throughput per hour coffee (crème):	30 L
Holding capacity coffee:	4 decanters (6.8 L)
Brew time:	6 min. / 2 decanters
Water connection:	Yes

TH-series

The TH brews coffee anywhere and ensures it stays fresh and flavourful for a lasting period. It's manual-fill design lets you brew directly into Airpot or vacuum flasks. Perfect for mobile setups and locations without fixed water connections.



TH

Equipped with 1 brewing system. Without water connection.

Dimensions (WxDxH) 235x406x545mm	Article number 8.010.040.31002
Rated power 230V~ 50/60Hz 2310W	Price €488,00

Throughput per hour coffee (crème):	19 L
Holding capacity coffee:	1 Airpot (2.2 L)
Brew time:	7 min. / 2.2 L



THa

Equipped with 1 brewing system, digital display and adjustable programming. With water connection.

Dimensions (WxDxH) 235x406x545mm	Article number 8.010.070.31002
Rated power 230V~ 50/60Hz 2310W	Price €697,00

Throughput per hour coffee (crème):	18 L
Holding capacity coffee:	1 Airpot (2.2 L)
Brew time:	8 min. / 2.2 L
Water connection:	Yes

Novo

The Novo is a straightforward filter coffee machine designed for practical, everyday use. Delivering dependable performance with essential features. It works without a direct water connection, so you can place it wherever needed.



Novo

Equipped with 1 brewing system, 2 decanters and 2 hot plates.

Dimensions (WxDxH) 214x391x424mm	Article number 8.010.080.31002
Rated power 230V~ 50/60Hz 2130W	Price €372,00

Throughput per hour coffee (crème):	18 L
Holding capacity coffee:	2 decanters (3.4 L)
Brew time:	5 min. / 1 decanter

Iso

The Iso is a reliable filter coffee machine that's easy to use and can be placed anywhere. With manual-fill design with stainless steel vacuum flask, it offers all the essentials for everyday coffee moments.



Iso

Equipped with 1 brewing system and vacuum flask (2 litres).

Dimensions (WxDxH) 214x391x465mm	Article number 8.010.090.31002
Rated power 230V~ 50/60Hz 2000W	Price €428,00

Throughput per hour coffee (crème):	18 L
Holding capacity coffee:	2 L
Brew time:	6 min. / 2 L

Quick filter marine

Bravilor Bonamat's marine models are engineered for reliable performance in demanding maritime environments. Both models include LED indicators, descaling alerts, and durable components. Guaranteeing a smooth and efficient brewing process wherever you are on the water.



Mondo marine 127V

Equipped with 1 brewing system and 2 hot plates.

Dimensions (WxDxH) 195x406x446mm	Article number 4.010.441.110
Rated power 110-127V 50/60Hz 1875W	Price €883,00

Throughput per hour coffee (crème):	18 L
Holding capacity coffee:	2 decanters (3.4 L)
Brew time:	5 min. / 1 decanter



Mondo marine 230V

With 1 brewing system and 2 hot plates.

Dimensions (WxDxH) 195x406x446mm	Article number 4.010.440.110
Rated power 230V~ 50/60Hz 2140W	Price €704,00

Throughput per hour coffee (crème):	18 L
Holding capacity coffee:	2 decanters (3.4 L)
Brew time:	5 min. / 1 decanter



Matic marine 127V

Equipped with 1 brewing system and 2 hot plates.

Dimensions (WxDxH) 195x406x446mm	Article number 4.010.641.110
Rated power 110-127V 50/60Hz 1875W	Price €1.059,00

Throughput per hour coffee (crème):	15 L
Holding capacity coffee:	2 decanters (3.4 L)
Brew time:	6 min. / 1 decanter
Water connection:	Yes



Matic marine 230V

Equipped with 1 brewing system and 2 hot plates.

Dimensions (WxDxH) 195x406x446mm	Article number 4.010.640.110
Rated power 230V~ 50/60Hz 2140W	Price €883,00

Throughput per hour coffee (crème):	15 L
Holding capacity coffee:	2 decanters (3.4 L)
Brew time:	6 min. / 1 decanter
Water connection:	Yes

RLX

The RLX delivers barista-quality coffee quickly from integrated containers. Ensuring every serving is perfectly hot and ready to enjoy.



RLX 5

Equipped with 1 brewing system and 1 container (2 litres) with gauge glass.

Dimensions (WxDxH) 245x509x611mm	Article number 8.133.601.310
Rated power 230V~ 50/60Hz 2065W	Price €1.472,00

Throughput per hour coffee (crème):	13 L
Holding capacity coffee:	2 L
Brew time:	7 min. / 1 container
Water connection:	Yes



RLX 55

Equipped with 2 brewing systems and 2 containers (2 litres each) with gauge glass.

Dimensions (WxDxH) 475x509x611mm	Article number 8.133.503.310
Rated power 230V~ 50/60Hz 2065W	Price €2.375,00

Throughput per hour coffee (crème):	17 L
Holding capacity coffee:	4 L
Brew time:	7 min. / 2 containers
Water connection:	Yes



RLX 55 400V

Equipped with 2 brewing systems and 2 containers (2 litres each) with gauge glass.

Dimensions (WxDxH) 475x509x611mm	Article number 8.133.501.310
Rated power 400V 3N~ 50/60Hz 4130W	Price €2.375,00

Throughput per hour coffee (crème):	26 L
Holding capacity coffee:	4 L
Brew time:	7 min. / 2 containers
Water connection:	Yes



B5 L/R 400V

Equipped with 1 brewing system and 1 container (left or right from the column).

Dimensions (WxDxH) 452x440x799mm	Article number 4.100.801.110
Rated power 400V 3N~ 50Hz 3065W	Price €2.545,00

Throughput per hour coffee (crème):	30 L
Holding capacity coffee:	5 L
Brew time:	10 min. / 5 L
Water connection:	Yes

B-series

The B-series is ideal for peak moments, such as the interval in the theatre or the coffee supply in the hospital. Quickly and easily large quantities of coffee, brewed in convenient, moveable containers that enable you to serve coffee at any moment and at any place you want.



B5

Equipped with 1 brewing system and 2 containers of 5 litres each.

Dimensions (WxDxH) 635x440x799mm	Article number 4.100.203.110
Rated power 230V~ 50Hz 3130W	Price €3.117,00

Throughput per hour coffee (crème):	30 L
Holding capacity coffee:	10 L
Brew time:	10 min. / 5 L
Water connection:	Yes



B10 400V

Equipped with 1 brewing system and 2 containers of 10 litres each.

Dimensions (WxDxH) 955x512x840mm	Article number 4.210.101.110
Rated power 400V 3N~ 50Hz 6180W	Price €3.735,00

Throughput per hour coffee (crème):	60 L
Holding capacity coffee:	20 L
Brew time:	10 min. / 10 L
Water connection:	Yes



B10 container left

Equipped with 1 brewing system and 1 container of 10 litres (left or right from the column).

Dimensions (WxDxH) 612x512x840mm	Article number 4.210.701.110
Rated power 400V 3N~ 50Hz 6090W	Price €2.988,00

Throughput per hour coffee (crème):	60 L
Holding capacity coffee:	10 L
Brew time:	10 min. / 10 L
Water connection:	Yes



B5 400V

Equipped with 1 brewing system and 2 containers of 5 litres each.

Dimensions (WxDxH) 635x440x799mm	Article number 4.100.201.110
Rated power 400V 3N~ 50Hz 3130W	Price €3.117,00

Throughput per hour coffee (crème):	30 L
Holding capacity coffee:	10 L
Brew time:	10 min. / 5 L
Water connection:	Yes



B10 container right

Equipped with 1 brewing system and 1 container of 10 litres (left or right from the column).

Dimensions (WxDxH) 612x512x840mm	Article number 4.211.301.110
Rated power 400V 3N~ 50Hz 6090W	Price €2.988,00

Throughput per hour coffee (crème):	60 L
Holding capacity coffee:	10 L
Brew time:	10 min. / 10 L
Water connection:	Yes



B5 L/R

Equipped with 1 brewing system and 1 container (left or right from the column).

Dimensions (WxDxH) 452x440x799mm	Article number 4.100.803.110
Rated power 230V~ 50Hz 3065W	Price €2.545,00

Throughput per hour coffee (crème):	30 L
Holding capacity coffee:	5 L
Brew time:	10 min. / 5 L
Water connection:	Yes



B20

Equipped with 1 brewing system and 2 containers of 20 litres each.

Dimensions (WxDxH) 1173x600x947mm	Article number 4.320.601.110
Rated power 400V 3N~ 50/60Hz 9240W	Price €4.754,00

Throughput per hour coffee (crème):	90 L
Holding capacity coffee:	40 L
Brew time:	14 min. / 20 L
Water connection:	Yes



B20 L/R

Equipped with 1 brewing system and 1 container of 20 litres (left or right from the column).

Dimensions (WxDxH) 739x600x947mm	Article number 4.321.201.110
Rated power 400V 3N~ 50/60Hz 9120W	Price €3.695,00

Throughput per hour coffee (crème):	90 L
Holding capacity coffee:	20 L
Brew time:	14 min. / 20 L
Water connection:	Yes



B40

Equipped with 1 brewing system and 2 containers of 40 litres each.

Dimensions (WxDxH) 1305x652x1101mm	Article number 4.428.901.110
Rated power 400V 3N~ 50/60Hz 15120W	Price €6.819,00

Throughput per hour coffee (crème):	145 L
Holding capacity coffee:	80 L
Brew time:	17 min. / 40 L
Water connection:	Yes



B40 container left

Equipped with 1 brewing system and 1 container of 40 litres (left or right from the column).

Dimensions (WxDxH) 803x652x1101mm	Article number 4.429.301.110
Rated power 400V 3N~ 50/60Hz 14960W	Price €4.996,00

Throughput per hour coffee (crème):	145 L
Holding capacity coffee:	80 L
Brew time:	17 min. / 40 L
Water connection:	Yes



B40 container right

Equipped with 1 brewing system and 1 container of 40 litres (left or right from the column).

Dimensions (WxDxH) 803x652x1101mm	Article number 4.429.901.110
Rated power 400V 3N~ 50/60Hz 14960W	Price €4.996,00

Throughput per hour coffee (crème):	145 L
Holding capacity coffee:	40 L
Brew time:	17 min. / 40 L
Water connection:	Yes

B HW-series

Do you also need hot water in addition to coffee? Then opt for the B HW-series. These machines have separate hot water taps for, for instance, very easily making tea.



B5 HW

Equipped with 1 brewing system, 2 containers of 5 litres each and separate hot water tap.

Dimensions (WxDxH) 790x570x799mm	Article number 4.102.701.110
Rated power 400V 3N~ 50Hz 5330W	Price €4.145,00

Throughput per hour coffee (crème):	30 L
Holding capacity coffee:	10 L
Brew time:	10 min. / 5 L
Water connection:	Yes



B5 HW container left

Equipped with 1 brewing system, 1 container of 5 litres (left or right from the column) and separate hot water tap.

Dimensions (WxDxH) 546x570x799mm	Article number 4.104.301.110
Rated power 400V 3N~ 50Hz 5265W	Price €3.566,00

Throughput per hour coffee (crème):	30 L
Holding capacity coffee:	5 L
Brew time:	10 min. / 5 L
Water connection:	Yes



B5 HW container right

Equipped with 1 brewing system, 1 container of 5 litres (left or right from the column) and separate hot water tap.

Dimensions (WxDxH) 546x570x799mm	Article number 4.105.901.110
Rated power 400V 3N~ 50Hz 5265W	Price €3.566,00

Throughput per hour coffee (crème):	30 L
Holding capacity coffee:	5 L
Brew time:	10 min. / 5 L
Water connection:	Yes



B10 HW

Equipped with 1 brewing system, 2 containers of 10 litres and separate hot water tap.

Dimensions (WxDxH) 989x570x840mm	Article number 4.213.201.110
Rated power 400V 3N~ 50Hz 8380W	Price €4.557,00

Throughput per hour coffee (crème):	60 L
Holding capacity coffee:	20 L
Brew time:	10 min. / 10 L
Water connection:	Yes



B10 HW container left

Equipped with 1 brewing system, 1 container of 10 litre (left or right from the column) and separate hot water tap.

Dimensions (WxDxH) 645x570x840mm	Article number 4.214.801.110
Rated power 400V 3N~ 50Hz 8290W	Price €3.807,00

Throughput per hour coffee (crème):	60 L
Holding capacity coffee:	10 L
Brew time:	10 min. / 10 L
Water connection:	Yes



B10 HW container right

Equipped with 1 brewing system, 1 container of 10 litre (left or right from the column) and separate hot water tap.

Dimensions (WxDxH) 645x570x840mm	Article number 4.216.401.110
Rated power 400V 3N~ 50Hz 8290W	Price €3.807,00

Throughput per hour coffee (crème):	60 L
Holding capacity coffee:	10 L
Brew time:	10 min. / 10 L
Water connection:	Yes



B20 HW

Equipped with 1 brewing system, 2 containers of 20 litres each and separate hot water tap.

Dimensions (WxDxH) 1173x600x947mm	Article number 4.323.101.110
Rated power 400V 3N~ 50/60Hz 11440W	Price €5.507,00

Throughput per hour coffee (crème):	90 L
Holding capacity coffee:	40 L
Brew time:	14 min. / 20 L
Water connection:	Yes



B20 HW L/R

Equipped with 1 brewing system, 1 container of 20 litres (left or right from the column) and separate hot water tap.

Dimensions (WxDxH) 739x600x947mm	Article number 4.324.701.110
Rated power 400V 3N~ 50/60Hz 11320W	Price €4.450,00

Throughput per hour coffee (crème):	90 L
Holding capacity coffee:	20 L
Brew time:	14 min. / 20 L
Water connection:	Yes

B-series wall

The B-series is also available in wall-mounted models, so you can make coffee at a central place and serve it locally. Also available with a double tap or as insulated model. Please note: Trolley and tip-up plate are not included as standard.



B5 W

Equipped with 1 brewing system and 2 containers of 5 litres each.

Dimensions (WxDxH) 970x540x740mm	Article number 4.102.103.110
Rated power 230V~ 50Hz 3130W	Price €3.008,00

Throughput per hour coffee (crème):	30 L
Holding capacity coffee:	10 L
Brew time:	10 min. / 5 L
Water connection:	Yes



B5 W 400V

Equipped with 1 brewing system and 2 containers of 5 litres each.

Dimensions (WxDxH) 970x540x740mm	Article number 4.102.101.110
Rated power 400V 3N~ 50/60Hz 3130W	Price €3.008,00

Throughput per hour coffee (crème):	30 L
Holding capacity coffee:	10 L
Brew time:	10 min. / 5 L
Water connection:	Yes



B5 W L/R

Equipped with 1 brewing system and 1 container of 5 litres (left or right from the column).

Dimensions (WxDxH) 585x540x740mm	Article number 4.101.503.110
Rated power 230V~ 50/60Hz 3065W	Price €2.375,00

Throughput per hour coffee (crème):	30 L
Holding capacity coffee:	5 L
Brew time:	10 min. / 5 L
Water connection:	Yes



B5 W L/R 400V

Equipped with 1 brewing system and 1 container of 5 litres (left or right from the column).

Dimensions (WxDxH) 585x540x740mm	Article number 4.101.501.110
Rated power 400V 3N~ 50/60Hz 3065W	Price €2.375,00

Throughput per hour coffee (crème):	30 L
Holding capacity coffee:	5 L
Brew time:	10 min. / 5 L
Water connection:	Yes



B10 W

Equipped with 1 brewing system and 2 containers of 10 litres each.

Dimensions (WxDxH)	Article number
1115x572x781mm	4.212.601.110
Rated power	Price
400V 3N~ 50Hz 6180W	€3.566,00

Throughput per hour coffee (crème):	60 L
Holding capacity coffee:	20 L
Brew time:	10 min. / 10 L
Water connection:	Yes



B10 W L/R

Equipped with 1 brewing system and 1 container of 10 litres (left or right from the column).

Dimensions (WxDxH)	Article number
658x572x781mm	4.212.001.110
Rated power	Price
400V 3N~ 50Hz 6090W	€2.736,00

Throughput per hour coffee (crème):	60 L
Holding capacity coffee:	10 L
Brew time:	10 min. / 10 L
Water connection:	Yes



B20 W

Equipped with 1 brewing system and 2 containers of 20 litres each.

Dimensions (WxDxH)	Article number
1254x570x888mm	4.322.501.110
Rated power	Price
400V 3N~ 50/60Hz 9240W	€4.450,00

Throughput per hour coffee (crème):	90 L
Holding capacity coffee:	40 L
Brew time:	14 min. / 20 L
Water connection:	Yes



B20 W L/R

Equipped with 1 brewing system and 1 container of 20 litres (left or right from the column).

Dimensions (WxDxH)	Article number
742x570x888mm	4.321.901.110
Rated power	Price
400V 3N~ 50/60Hz 9120W	€3.312,00

Throughput per hour coffee (crème):	90 L
Holding capacity coffee:	20 L
Brew time:	14 min. / 20 L
Water connection:	Yes



B40 W

Equipped with 1 brewing system and 2 containers of 40 litres each.

Dimensions (WxDxH)	Article number
1320x565x1042mm	4.431.201.110
Rated power	Price
400V 3N~ 50/60Hz 15120W	€6.353,00

Throughput per hour coffee (crème):	145 L
Holding capacity coffee:	80 L
Brew time:	17 min. / 40 L
Water connection:	Yes



B40 W L/R

Equipped with 1 brewing system and 1 container of 40 litres (left or right from the column).

Dimensions (WxDxH)	Article number
775x565x1042mm	4.430.601.110
Rated power	Price
400V 3N~ 50/60Hz 14960W	€4.485,00

Throughput per hour coffee (crème):	145 L
Holding capacity coffee:	40 L
Brew time:	17 min. / 40 L
Water connection:	Yes

B HW-series wall

Just like the B-series, the B HW-series is also available in wall-mounted models. This way you can make coffee and tea at a central place and serve it locally. Also available with a double tap or as insulated model. Please note: Trolley and tip-up plate are not included as standard.



B5 HW W

Equipped with 1 brewing system, 2 containers of 5 litres each and separate hot water tap.

Dimensions (WxDxH)	Article number
1000x540x740mm	4.108.901.110
Rated power	Price
400V 3N~ 50Hz 5330W	€3.895,00

Throughput per hour coffee (crème):	30 L
Holding capacity coffee:	10 L
Brew time:	10 min. / 5 L
Water connection:	Yes



B5 HW W L/R

Equipped with 1 brewing column, 1 container of 5 litres (left or right from the column) and separate hot water tap.

Dimensions (WxDxH)	Article number
615x540x740mm	4.107.701.110
Rated power	Price
400V 3N~ 50Hz 5265W	€3.261,00

Throughput per hour coffee (crème):	30 L
Holding capacity coffee:	5 L
Brew time:	10 min. / 5 L
Water connection:	Yes



B10 HW W

Equipped with 1 brewing system, 2 containers of 10 litres each and separate hot water tap.

Dimensions (WxDxH)	Article number
1145x572x781mm	4.219.401.110
Rated power	Price
400V 3N~ 50Hz 8380W	€4.342,00

Throughput per hour coffee (crème):	60 L
Holding capacity coffee:	20 L
Brew time:	10 min. / 10 L
Water connection:	Yes



B10 HW W L/R

Equipped with 1 brewing system, 1 container of 10 litres (left or right from the column) and separate hot water tap.

Dimensions (WxDxH) 688x572x781mm	Article number 4.218.201.110
Rated power 400V 3N~ 50Hz 8290W	Price €3.511,00

Throughput per hour coffee (crème):	60 L
Holding capacity coffee:	10 L
Brew time:	10 min. / 10 L
Water connection:	Yes



B20 HW W

Equipped with 1 brewing system, 2 containers of 20 litres each and separate hot water tap.

Dimensions (WxDxH) 1254x570x888mm	Article number 4.327.701.110
Rated power 400V 3N~ 50/60Hz 11440W	Price €5.204,00

Throughput per hour coffee (crème):	90 L
Holding capacity coffee:	40 L
Brew time:	14 min. / 20 L
Water connection:	Yes



B20 HW W L/R

Equipped with 1 brewing system, 1 container of 20 litres (left or right from the column) and separate hot water tap.

Dimensions (WxDxH) 742x570x888mm	Article number 4.326.501.110
Rated power 400V 3N~ 50/60Hz 11320W	Price €4.068,00

Throughput per hour coffee (crème):	90 L
Holding capacity coffee:	20 L
Brew time:	14 min. / 20 L
Water connection:	Yes



B5 marine 115V

Equipped with 1 brewing system and 2 containers of 5 litres each. With connection for mains water supply 3/4 inch.

Dimensions (WxDxH) 635x440x799mm	Article number 4.150.841.110
Rated power 440V3/115V~ 50/60Hz 3700W	Price €4.517,00

Holding capacity coffee:	10 L
Brew time:	10 min. / 5 L
Water connection:	Yes



B10 marine

Equipped with 1 brewing system and 2 containers of 10 litres each. With connection for mains water supply 3/4 inch.

Dimensions (WxDxH) 955x512x840mm	Article number 4.250.540.110
Rated power 440V3/230V~ 50/60Hz 7400W	Price €4.887,00

Throughput per hour coffee (crème):	60 L
Holding capacity coffee:	20 L
Brew time:	10 min. / 10 L
Water connection:	Yes



B10 marine 115V

Equipped with 1 brewing system and 2 containers of 10 litres each. With connection for mains water supply 3/4 inch.

Dimensions (WxDxH) 955x512x840mm	Article number 4.250.741.110
Rated power 440V3/115V~ 50/60Hz 7400W	Price €5.040,00

Holding capacity coffee:	20 L
Brew time:	10 min. / 10 L
Water connection:	Yes

B-series marine

Bravilor Bonamat's B-series marine models brew high volumes of coffee reliably in tough maritime conditions. All models feature thermal containers, easy digital controls, and built-in safety for professional coffee service at sea.



B5 HW marine

Equipped with 1 brewing system and 2 containers of 5 litres each. With separate hot water tap. With connection for mains water supply 3/4 inch.

Dimensions (WxDxH) 635x440x799mm	Article number 4.151.040.110
Rated power 440V3/230V~ 50/60Hz 6300W	Price €5.450,00

Holding capacity coffee:	10 L
Brew time:	10 min. / 5 L
Water connection:	Yes



B5 marine

Equipped with 1 brewing system and 2 containers of 5 litres each. With connection for mains water supply 3/4 inch.

Dimensions (WxDxH) 635x440x799mm	Article number 4.150.640.110
Rated power 440V3/230V~ 50/60Hz 3700W	Price €4.301,00

Holding capacity coffee:	10 L
Brew time:	10 min. / 5 L
Water connection:	Yes



B5 HW marine 115V

Equipped with 1 brewing system and 2 containers of 5 litres each. With separate hot water tap. With connection for mains water supply 3/4 inch.

Dimensions (WxDxH) 635x440x799mm	Article number 4.151.241.110
Rated power 440V3/115V~ 50/60Hz 6300W	Price €5.674,00

Holding capacity coffee:	10 L
Brew time:	10 min. / 5 L
Water connection:	Yes



B10 HW marine

Equipped with 1 brewing system and 2 containers of 10 litres each. With separate hot water tap. With connection for mains water supply 3/4 inch.

Dimensions (WxDxH)	Article number
989x570x840mm	4.250.940.110
Rated power	Price
440V3/230V~ 50/60Hz 10000W	€5.935,00

Holding capacity coffee:	20 L
Brew time:	10 min. / 10 L
Water connection:	Yes



B10 HW marine 115V

Equipped with 1 brewing system and 2 containers of 10 litres each. With separate hot water tap. With connection for mains water supply 3/4 inch.

Dimensions (WxDxH)	Article number
989x570x840mm	4.251.141.110
Rated power	Price
440V3/115V~ 50/60Hz 10000W	€6.100,00

Holding capacity coffee:	20 L
Brew time:	10 min. / 10 L
Water connection:	Yes

Containers

Engineered for excellence in beverage presentation and preservation, these containers ensure heat retention, flawless serving performance and a refined experience for both guests and baristas.



NAK 20

Brew unit consisting of container type VHG, filter pan, water divider and mixer.

Dimensions (DxH)	Article number
374x706mm	4.342.603.110
Rated power	Price
230V~ 50/60Hz 120W	€1.137,00

Holding capacity coffee:	20 L
--------------------------	------



NAK 40

Brew unit consisting of container type VHG, filter pan, water divider and mixer.

Dimensions (DxH)	Article number
423x856mm	4.443.203.110
Rated power	Price
230V~ 50/60Hz 160W	€1.874,00

Holding capacity coffee:	40 L
--------------------------	------



V 5

Container completely insulated, for hot or cold drinks. Without gauge glass.

Dimensions (DxH)	Article number
210x445mm	8.411.001.520
Rated power	Price
No connection	€661,00

Holding capacity coffee:	5 L
--------------------------	-----



V 10

Container completely insulated, for hot or cold drinks. Without gauge glass.

Dimensions (DxH)	Article number
286x464mm	8.421.001.520
Rated power	Price
No connection	€773,00

Holding capacity coffee:	10 L
--------------------------	------



NAK 5

Brew unit consisting of container type VHG, filter pan, water divider and mixer.

Dimensions (DxH)	Article number
210x573mm	4.141.403.110
Rated power	Price
230V~ 50/60Hz 65W	€633,00

Holding capacity coffee:	5 L
--------------------------	-----



NAK 10

Brew unit consisting of container type VHG, filter pan, water divider and mixer.

Dimensions (DxH)	Article number
286x617mm	4.242.003.110
Rated power	Price
230V~ 50/60Hz 90W	€833,00

Holding capacity coffee:	10 L
--------------------------	------



VG 5

Container completely insulated, for hot or cold drinks.

Dimensions (DxH)	Article number
210x445mm	8.410.901.520
Rated power	Price
No connection	€592,00

Holding capacity coffee:	5 L
--------------------------	-----



VG 10

Container completely insulated, for hot or cold drinks.

Holding capacity coffee: 10 L

Dimensions (DxH) 286x464mm	Article number 8.420.901.520
Rated power No connection	Price €698,00



VG 20

Container completely insulated, for hot or cold drinks.

Holding capacity coffee: 20 L

Dimensions (DxH) 374x510mm	Article number 8.430.901.520
Rated power No connection	Price €938,00



VG 40

Container completely insulated, for hot or cold drinks.

Holding capacity coffee: 40 L

Dimensions (DxH) 423x629mm	Article number 8.440.901.520
Rated power No connection	Price €1.376,00



VHG 5

With electrical heating.

Holding capacity coffee: 5 L

Dimensions (DxH) 210x445mm	Article number 8.410.101.720
Rated power 230V~ 50/60Hz 65W	Price €467,00



VHG 5 D

With electrical heating and extra non-drip tap.

Holding capacity coffee: 5 L

Dimensions (DxH) 210x445mm	Article number 8.410.401.720
Rated power 230V~ 50/60Hz 65W	Price €640,00



VHG 10

With electrical heating.

Holding capacity coffee: 10 L

Dimensions (DxH) 286x464mm	Article number 8.420.101.720
Rated power 230V~ 50/60Hz 90W	Price €602,00



VHG 10 D

With electrical heating and extra non-drip tap.

Holding capacity coffee: 10 L

Dimensions (DxH) 286x464mm	Article number 8.420.401.720
Rated power 230V~ 50/60Hz 90W	Price €802,00



VHG 20

With electrical heating.

Holding capacity coffee: 20 L

Dimensions (DxH) 374x510mm	Article number 8.430.101.720
Rated power 230V~ 50/60Hz 120W	Price €804,00



VHG 20 D

With electrical heating and extra non-drip tap.

Holding capacity coffee: 20 L

Dimensions (DxH) 374x510mm	Article number 8.430.401.720
Rated power 230V~ 50/60Hz 120W	Price €986,00



VHG 40

With electrical heating.

Holding capacity coffee: 40 L

Dimensions (DxH) 423x629mm	Article number 8.440.101.720
Rated power 230V~ 50/60Hz 160W	Price €1.291,00



VHG 40 D

With electrical heating and extra non-drip tap.

Dimensions (DxH) 423x629mm	Article number 8.440.401.720
Rated power 230V~ 50/60Hz 160W	Price €1.467,00

Holding capacity coffee: 40 L
Water connection: _____

Containers marine

Specially engineered for marine and offshore service, featuring enhanced stability, robust construction and corrosion-resistant components for uncompromising performance at sea.



VHG 5 marine 115V

Contents 5 litres.

Dimensions (DxH) 210x445mm	Article number 8.410.140.620
Rated power 115V~ 50/60Hz 65W	Price €626,00

Holding capacity coffee: 5 L



VHG 10 marine 230V

Contents 10 litres.

Dimensions (DxH) 286x464mm	Article number 8.420.140.620
Rated power 230V~ 50/60Hz 90W	Price €755,00

Holding capacity coffee: 10 L

Percolators

Just add water and coarse ground coffee, switch it on, and the unit takes care of the rest. Including keeping the coffee warm automatically. Reliable, durable design made for professional environments.



Percolator 45

Manual fill.

Dimensions (DxH) 233x425mm	Article number 8.060.110.31002
Rated power 230V~ 50/60Hz 950W	Price €248,00

Throughput per hour coffee: 10 L
Holding capacity coffee: 6 L



Percolator 75

Manual fill.

Dimensions (DxH) 282x430mm	Article number 8.060.120.31002
Rated power 230V~ 50/60Hz 1650W	Price €285,00

Throughput per hour coffee: 15 L
Holding capacity coffee: 10 L



Percolator 125

Manual fill.

Dimensions (DxH) 390x575mm	Article number 8.060.330.31002
Rated power 230V~ 50/60Hz 2600W	Price €411,00

Throughput per hour coffee: 24 L
Holding capacity coffee: 16 L

Hot Water/Milk Machines

HWA-SERIES | HM/HCM-SERIES



HWA-series

The hot water series offers both manual tap dispensers (HWA) and automatic dispensers (HWA D), designed for flawless, continuous service. Its compact, narrow design makes it an ideal choice where space is at a premium.



HWA 3

Tap for free-flow dispensing. Stainless steel. For locations with and without water supply 3/4 inch.

Dimensions (WxDxH)

240x375x395mm

Rated power

230V~ 50/60Hz 2000W

Article number

8.060.350.31002

Price

€741,00

Throughput per hour hot water:

15 L

Holding capacity hot water:

3 L

Water connection:

Yes



HWA 6

Tap for free-flow dispensing. Stainless steel. For locations with water supply 3/4 inch.

Dimensions (WxDxH)

242x443x435mm

Rated power

230V~ 50/60Hz 2830W

Article number

8.060.130.32002

Price

€1.164,00

Throughput per hour hot water:

30 L

Holding capacity hot water:

5.6 L

Water connection:

Yes



HWA 6D

Push buttons for programmable dispensing. Stainless steel. For locations with water supply 3/4 inch.

Dimensions (WxDxH)

242x443x435mm

Rated power

230V~ 50/60Hz 2830W

Article number

8.060.140.32002

Price

€1.299,00

Throughput per hour hot water:

30 L

Holding capacity hot water:

5.6 L

Water connection:

Yes



HWA 8

Tap for free-flow dispensing. Stainless steel. For locations with and without water supply 3/4 inch.

Dimensions (WxDxH)

317x407x456mm

Rated power

230V~ 50/60Hz 2500W

Article number

8.060.310.31002

Price

€696,00

Throughput per hour hot water:

25 L

Holding capacity hot water:

8 L

Water connection:

Yes



HWA 12

Tap for free-flow dispensing. Stainless steel. For locations with and without water supply 3/4 inch.

Dimensions (WxDxH)

317x407x540mm

Rated power

230V~ 50/60Hz 2500W

Article number

8.060.320.31002

Price

€733,00

Throughput per hour hot water:

25 L

Holding capacity hot water:

12 L

Water connection:

Yes



HWA 14

Tap for free-flow dispensing. Stainless steel. For locations with water supply 3/4 inch.

Dimensions (WxDxH)	Article number
242x568x501mm	8.060.150.32002
Rated power	Price
230V~ 50/60Hz 2830W	€1.279,00

Throughput per hour hot water:	30 L
Holding capacity hot water:	13.1 L
Water connection:	Yes



HWA 14D

Push buttons for programmable dispensing. Stainless steel. For locations with water supply 3/4 inch.

Dimensions (WxDxH)	Article number
242x568x501mm	8.060.170.32002
Rated power	Price
230V~ 50/60Hz 2830W	€1.417,00

Throughput per hour hot water:	30 L
Holding capacity hot water:	13.1 L
Water connection:	Yes



HWA 21

Tap for free-flow dispensing. Stainless steel. For locations with water supply 3/4 inch.

Dimensions (WxDxH)	Article number
242x568x635mm	8.060.190.32002
Rated power	Price
230V~ 50/60Hz 2830W	€1.501,00

Throughput per hour hot water:	30 L
Holding capacity hot water:	20.7 L
Water connection:	Yes



HWA 21 400V

Tap for free-flow dispensing. Stainless steel. For locations with water supply 3/4 inch.

Dimensions (WxDxH)	Article number
242x568x635mm	8.060.200.12002
Rated power	Price
400V 3N~ 50/60Hz 5615W	€1.775,00

Throughput per hour hot water:	60 L
Holding capacity hot water:	20.7 L
Water connection:	Yes

HM/HCM-series

The HM/HCM-series warms milk gently using the bain-marie method, ensuring perfect temperature and texture. Its versatile free-flow tap allows precise dispensing of hot milk or chocolate milk, accommodating any jug, mug, or cup with ease.



HM 505

Suitable for heating large quantities of hot milk (5 litres). The milk is heated through the bain-marie system without getting burnt or stuck.

Dimensions (DxH)	Article number
210x423mm	8.513.001.310
Rated power	Price
230V~ 50/60Hz 2090W	€1.074,00

Holding capacity milk:	5 L
Water connection:	No



HM 510

Suitable for heating large quantities of hot milk (10 litres). The milk is heated through the bain-marie system without getting burnt or stuck.

Dimensions (DxH)	Article number
290x438mm	8.523.001.310
Rated power	Price
230V~ 50/60Hz 2850W	€1.483,00

Holding capacity milk:	10 L
Water connection:	No



HM 520

Suitable for heating large quantities of hot milk (20 litres). The milk is heated through the bain-marie system without getting burnt or stuck.

Dimensions (DxH)	Article number
377x458mm	8.533.001.310
Rated power	Price
230V~ 50/60Hz 2850W	€1.863,00

Holding capacity milk:	20 L
Water connection:	No



HCM 510

Suitable for heating large quantities of chocolate milk (10 litres). The chocolate milk is heated through the bain-marie system without getting burnt or stuck.

Dimensions (DxH)	Article number
290x438mm	8.523.501.510
Rated power	Price
230V~ 50/60Hz 2850W	€2.003,00

Holding capacity milk:	10 L
Water connection:	No

Accessories



Cabinets



Cabinet

With lockable section for water bottle and drawer for ingredients.

Dimensions (WxDxH)
500x580x920mm

Article number
7.231.101.101

Price
€876,70



Cabinet

for Esprecious / FreshBrew (without top plate)

Cabinet for Esprecious 11, 12 or 22 (only in combination with top plate 7.231.117.101). With space for waste bin.

Dimensions (WxDxH)
320x435x840mm

Article number
7.231.110.101

Price
€1.013,50



Cabinet XL

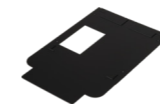
for FreshMore XL/FreshGround XL

For FreshMore XL and FreshGround XL.

Dimensions (WxDxH)
460x435x840mm

Article number
7.231.111.101

Price
€1.090,40



Top plate

for Esprecious/FreshBrew cabinet

Only in combination with cabinet (7.231.110.101) when installing Esprecious 11, 12 or 22. With transit opening.

Dimensions (WxDxH)
320x435x840mm

Article number
7.231.117.101

Price
€57,00

Cup heaters



WHK dark-grey

The WHK unit preheats your coffee cups and mugs.

Dimensions (WxDxH)
349x400x542mm

Article number
8.040.040.32001

Rated power
230V~ 50/60Hz 85W

Price
€734,00



WHK Stainless dark

The WHK unit preheats your coffee cups and mugs.

Dimensions (WxDxH)
349x400x542mm

Article number
8.040.040.32002

Rated power
230V~ 50/60Hz 85W

Price
€807,00

Descal- and cleaningproducts



1 jar with 120 cleaning tablets

for FreshMilk

FreshMilk cleaning tablets in a jar with 100 tablets.

Article number
7.193.401.101

Price
€24,30



Box with 12 jars of 120 cleaning tablets

for FreshMilk

FreshMilk cleaning tablets in 12 jars with 100 tablets.

Article number

7.193.401.102

Price

€261,80



Brush

For cleaning.

Article number

7.110.606.101

Price

€3,00



Brush

For espresso, instant and fresh brew equipment.

Article number

7.290.104.101

Price

€4,50



Canister brush

For instant canisters.

Article number

7.270.102.101

Price

€6,30



Cleaner 1 carton

(10 flasks of 1 kilogram)

For removal of coffee and tea stains.

Article number

7.191.102.201

Price

€172,90



Cleaner 1 carton

(4x15 sachets of 15 grams)

For removal of coffee and tea stains.

Article number

7.191.101.212

Price

€66,80



Cleaning tablets

(box with 12 jars)

Espresso cleaning tablets in 12 jars with 100 tablets.

Article number

7.193.101.102

Price

€314,70



Cleaning tablets

(Jar with 100 tablets of 1.2 g)

Espresso cleaning tablets in a jar with 100 tablets.

Article number

7.193.101.101

Price

€29,40



Funnel blue

For quick filtering, table-top and round filter machines.

Article number

7.094.002.101

Price

€4,50



Funnel white

For instant and fresh brew machines.

Article number

7.094.001.101

Price

€3,00



Gauge glass brush

For glass surfaces.

Article number

7.110.605.101

Price

€3,00



Pipe cleaner

Pipe cleaner

Article number

7.310.209.101

Price

€8,30



Renegite 1 carton

(4 x 15 sachets of 50 grams)

Descaling product.

Article number

7.190.101.212

Price

€64,30



Renegite 1 carton

(10 flasks of 1 kilogram)

Descaling product.

Article number

7.190.102.201

Price

€156,10

Drip-trays & pedestals



Bolero Turbo raiser

Increase the dispense height to 342 mm to allow the filling of airpots.

Dimensions (WxDxH)

326x504x91mm

Article number

7.270.512.101

Price

€180,70



Bolero Turbo XL raiser

Increase the dispense height to 342 mm to allow the filling of airpots.

Dimensions (WxDxH)

465x504x91mm

Article number

7.270.513.101

Price

€232,30



Drip tray

Airpot Furento

For use with airpots.

Article number

7.093.511.101

Price

€16,30



Drip tray

B5

Stainless steel.

Dimensions (WxDxH)

629x162x32mm

Article number

7.110.213.501

Price

€155,00



Drip tray

B5 L/R

Stainless steel.

Dimensions (WxDxH)

449x162x32mm

Article number

7.110.246.501

Price

€158,50



Drip tray

B5 HW
Stainless steel.

Dimensions (WxDxH)
787x162x32mm

Article number
7.110.229.501
Price
€170,70



Drip tray

B5 HW L/R
Stainless steel.

Dimensions (WxDxH)
543x162x32mm

Article number
7.110.247.501
Price
€198,20



Drip tray

B10
Stainless steel.

Dimensions (WxDxH)
874x162x32mm

Article number
7.110.311.501
Price
€170,70



Drip tray

B10 L/R
Stainless steel.

Dimensions (WxDxH)
571x162x32mm

Article number
7.110.346.501
Price
€171,70



Drip tray

B10 HW
Stainless steel.

Dimensions (WxDxH)
908x162x32mm

Article number
7.110.326.501
Price
€189,80



Drip tray

B10 HW L/R
Stainless steel.

Dimensions (WxDxH)
603x162x32mm

Article number
7.110.347.501
Price
€204,20



Drip tray

B20 (HW)
Stainless steel.

Dimensions (WxDxH)
1078x162x32mm

Article number
7.110.412.501
Price
€204,20



Drip tray

B20 HW L/R
Stainless steel.

Dimensions (WxDxH)
692x162x32mm

Article number
7.110.446.501
Price
€227,00



Drip tray

B40
Stainless steel.

Dimensions (WxDxH)
1217x162x32mm

Article number
7.110.513.501
Price
€279,80



Drip tray

B40 L/R
Stainless steel.

Dimensions (WxDxH)
758x162x32mm

Article number
7.110.546.501
Price
€339,90



Drip tray

Bolero 11 and 21
Matching drip tray is easy to remove and clean.

Article number
7.270.126.101
Price
€40,30



Drip tray

for Esprecious 11, 12 and 22
Drip tray design matches the Esprecious. Easy to clean.

Article number
7.270.608.101
Price
€87,10



Drip tray

for Esprecious 11, 12 and 22 (drainage set included)
Drip tray design matches the Esprecious. Easy to clean.

Article number
7.270.617.101
Price
€135,80



Drip tray

for Esprecious 11L and 21L
Drip tray design matches the Esprecious. Easy to clean.

Article number
7.270.618.101
Price
€87,10



Drip tray

for HWA-series (type 6, 6D, 14, 14D and 21)
Drip tray matches the HWA-series design. Easy to clean.

Article number
7.093.527.101
Price
€50,50



Drip tray

for Segó on pedestal
Drip tray matches the Segó design. Easy to clean. Please note! Bravor Bonamat offers two types of drip tray for the Segó. Are you not using a pedestal? Then choose the smaller drip tray: drip tray Segó.

Article number
7.270.628.101
Price
€71,60



Drip tray

FreshBrew
Drip tray FreshBrew

Article number
7.290.322.101
Price
TBD



Drip tray

HWA 3
Drip tray matches the HWA 3 design. Easy to clean.

Article number
7.093.529.101
Price
€46,90



Drip tray

HWA 8 & HWA 12
Drip tray matches the HWA 8 & HWA 12 design. Easy to clean.

Article number
7.093.528.101
Price
€40,30



Drip tray

RLX series
Drip tray matches the RLX-series design. Easy to clean.

Article number
7.093.522.101
Price
€56,00



Drip tray

Sego

Drip tray matches the Sego design. Easy to clean. Please note! Bravilor Bonamat offers two types of drip tray for the Sego. Are you using a pedestal? Then choose the larger drip tray: drip tray for Sego on a pedestal.

Article number

7.270.620.101

Price

€71,60



Drip tray

trolley

For 10S, 20S and 30S. Stainless steel.

Dimensions (WxDxH)

506x580x20mm

Article number

7.130.925.101

Price

€163,30



Drip tray

VHG D

Stainless steel.

Dimensions (WxDxH)

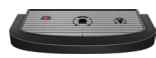
266x162x32mm

Article number

7.110.603.501

Price

€269,00



Drip tray

Bolero 32 and 43

Matching drip tray is easy to remove and clean.

Article number

7.270.216.101

Price

€73,30



Pedestal

B series B5

To raise the tap level up to 340 mm. For airpots/flasks.

Dimensions (WxDxH)

632x228x170mm

Article number

7.110.226.501

Price

€378,30



Pedestal

B series B5 L/R

To raise the tap level up to 340 mm. For airpots/flasks.

Dimensions (WxDxH)

451x228x170mm

Article number

7.110.243.501

Price

€474,30



Pedestal

B series B5 HW

To raise the tap level up to 340 mm. For airpots/flasks.

Dimensions (WxDxH)

790x358x170mm

Article number

7.110.228.501

Price

€712,10



Pedestal

B series B5 HW L/R

To raise the tap level up to 340 mm. For airpots/flasks.

Dimensions (WxDxH)

545x358x170mm

Article number

7.110.244.501

Price

€605,10



Pedestal

B series B10

To raise the tap level up to 340 mm. For airpots/flasks.

Dimensions (WxDxH)

877x300x170mm

Article number

7.110.327.501

Price

€528,30



Pedestal

B series B10 L/R

To raise the tap level up to 340 mm. For airpots/flasks.

Dimensions (WxDxH)

547x300x170mm

Article number

7.110.343.501

Price

€566,70



Pedestal

B series B10 HW

To raise the tap level up to 340 mm. For airpots/flasks.

Dimensions (WxDxH)

911x358x170mm

Article number

7.110.329.501

Price

€644,90



Pedestal

B series B10 HW L/R

To raise the tap level up to 340 mm. For airpots/flasks.

Dimensions (WxDxH)

606x358x170mm

Article number

7.110.344.501

Price

€695,30



Pedestal

B series B20(HW)

To raise the tap level up to 340 mm. For airpots/flasks.

Dimensions (WxDxH)

1081x388x150mm

Article number

7.110.427.501

Price

€720,50



Pedestal

B series B20(HW) L/R

To raise the tap level up to 340 mm. For airpots/flasks

Dimensions (WxDxH)

695x388x150mm

Article number

7.110.443.501

Price

€804,60



Pedestal

B series B40

To raise the tap level up to 340 mm. For airpots/flasks.

Dimensions (WxDxH)

1220x440x150mm

Article number

7.110.527.501

Price

€1.330,60



Pedestal

B40 L/R

To raise the tap level up to 340 mm. For airpots/flasks.

Dimensions (WxDxH)

760x440x150mm

Article number

7.110.543.501

Price

€958,30



Pedestal

Bolero 11 and 21

The pedestal increases the tap height from 120 to 240 mm.

Article number

7.270.125.101

Price

€172,90



Pedestal

Bolero 32 and 43

The pedestal increases the tap height from 120 to 240 mm.

Dimensions (WxDxH)

315x440x135mm

Article number

7.270.214.101

Price

€225,80



Sego L raiser set

The Sego raiser set comprises a number of components: the Sego L pedestal, a larger waste bin, a larger drip tray, a lower drip tray grid and a pedestal for the milk fridge.

Dimensions (WxDxH)

315x535x70mm

Article number

7.270.623.101

Price

€221,00



Sego raiser set

The Sego raiser set comprises a pedestal, a larger waste bin, a larger drip tray and lower drip tray grid.

Dimensions (WxDxH)
315x450x70mm

Article number
7.270.627.101

Price
€167,00



Sponge for drip tray Airpot

For drip-tray airpot.

Article number
7.093.516.101

Price
€13,40

Filter pans



Filter basket

B5 (HW)
For the use of filter cups.

Dimensions (DxH)
118x198mm

Article number
7.110.245.501

Price
€70,30



Filter basket

B10 (HW)
For the use of filter cups.

Dimensions (DxH)
161x270mm

Article number
7.110.345.501

Price
€77,40



Filter basket

B20 (HW)
For the use of filter cups.

Dimensions (DxH)
212x363mm

Article number
7.110.445.501

Price
€97,80



Filter basket

B40 (HW)
For the use of filter cups.

Dimensions (DxH)
290x398mm

Article number
7.110.545.501

Price
€189,80



Filter pan

B5 (HW)
For quickly brewing large quantities of coffee.

Article number
7.110.201.501

Price
€158,50



Filter pan

B10 (HW)
For quickly brewing large quantities of coffee.

Article number
7.110.301.501

Price
€189,80



Filter pan

B20 (HW)
For quickly brewing large quantities of coffee.

Article number
7.110.401.501

Price
€289,40



Filter pan

B40 (HW)
For quickly brewing large quantities of coffee.

Article number
7.110.501.501

Price
€381,80



Filter pan

for Mondo, Matic and TH (2010 version)
For Mondo, Matic and TH (2010 version). Stainless steel (without spring).

Article number
7.090.102.101

Price
€42,10



Filter pan

Novo/Iso
For Novo and Iso (2010 version). Black plastic.

Article number
7.090.810.101

Price
€16,30



Filter pan

RLX
Stainless steel (without spring).

Article number
7.090.101.101

Price
€33,00



Filter pan

spring
For filter pan Mondo, Matic and TH.

Article number
7.091.600.101

Price
€4,50



Tea filter

for 5L container round filter machines
For container.

Dimensions (H)
180mm

Article number
7.110.207.101

Price
€165,80



Tea filter

for 10L container round filter machines
For container.

Dimensions (H)
190mm

Article number
7.110.306.101

Price
€186,20



Tea filter

for 20L container round filter machines
For container.

Dimensions (H)
229mm

Article number
7.110.406.101

Price
€201,90



Tea filter

for 40L container round filter machines
For container.

Dimensions (H)
229mm

Article number
7.110.506.101

Price
€265,50



Tea filter pan

To use when making tea. Stainless steel.

Article number
7.091.102.101

Price
€105,70



Tea filter pan

for Mondo, Matic and TH

For Mondo, Matic and TH. Stainless steel. To use when making tea.

Article number

7.090.121.101

Price

€52,20



Filter cups

B20 (HW)

250 filters per box. 1 full pallet = 42 boxes.

Dimensions (D)

203/535 mm

Article number

7.150.104.301

Price

€56,00



Tea setting-up device

5L container

For container.

Dimensions (H)

157mm

Article number

7.110.208.501

Price

€137,00



Filter cups

B40

250 filters per box. 1 full pallet = 24 boxes.

Dimensions (D)

280/635 mm

Article number

7.150.105.301

Price

€105,10



Tea setting-up device

10L container

For container.

Dimensions (H)

197mm

Article number

7.110.307.501

Price

€155,00



Flat filter paper

B5 (HW)

Box of 6x250 filters (1500 pieces total).

Dimensions (D)

172mm

Article number

7.150.503.301

Price

€14,40



Tea setting-up device

20L container

For container.

Dimensions (H)

236mm

Article number

7.110.407.101

Price

€163,30



Flat filter paper

B10 (HW)

Box of 6x250 filters (1500 pieces total).

Dimensions (D)

244mm

Article number

7.150.507.301

Price

€16,30



Tea setting-up device

40L container

For container.

Dimensions (H)

267mm

Article number

7.110.507.101

Price

€255,80



Flat filter paper

B20 (HW)

Box of 6x250 filters (1500 pieces total).

Dimensions (D)

330mm

Article number

7.150.505.301

Price

€24,60

Filter papers



Filter cups

(box of 4x 4x1000 filters)

Order per outer box 4000 (4x1000) pieces in total.

Dimensions (D)

85/245 mm

Article number

7.150.101.101

Price

€24,60



Micro filter

B5 (HW)

For permanent use instead of filter paper. Stainless steel.

Dimensions (D)

172mm

Article number

7.110.203.101

Price

€102,10



Filter cups

(unbleached - box of 4 x 250 filters)

Filter cups are recommended for an optimum coffee distribution and delicious aromatic flavours.

Dimensions (D)

85/245 mm

Article number

7.151.101.103

Price

€24,60



Micro filter

B10 (HW)

For permanent use instead of filter paper. Stainless steel.

Dimensions (D)

244mm

Article number

7.110.303.101

Price

€121,30



Filter cups

B5 (HW)

250 filters per box. 1 full pallet = 112 boxes.

Dimensions (D)

110/360 mm

Article number

7.150.102.301

Price

€33,00



Micro filter

B20 (HW)

For permanent use instead of filter paper. Stainless steel.

Dimensions (D)

330mm

Article number

7.110.403.101

Price

€218,60



Filter cups

B10 (HW)

250 filters per box. 1 full pallet = 84 boxes.

Dimensions (D)

152/437 mm

Article number

7.150.103.301

Price

€36,00



Micro filter

B40

For permanent use instead of filter paper. Stainless steel.

Dimensions (D)

400mm

Article number

7.110.503.101

Price

€342,40



Filter rolls

(1 carton, 4 filter rolls for fresh brew machines)
1 Carton with 4 rolls (1 roll = ca. 2000 cups).

Article number
7.152.101.101
Price
€84,80

Filter systems



BWFS

100 system

Suitable for use with all of our equipment requiring connection to the mains water supply. Capacity is dependent on the hardness of the water in the local area (ca. 5,600 litres at 10 °dH). BWFS is not suitable for high volume machines and round filter equipment and alternatives are available.

Article number
7.094.910.101
Price
€123,70



BSRS

200 system

Suitable for use with all of our equipment requiring connection to the mains water supply. Capacity is dependent on the hardness of the water in the local area (ca. 1,600 litres at 10 °dH). BSRS is not suitable for high volume machines and round filter equipment and alternatives are available.

Article number
7.094.900.101
Price
€181,40



Replacement filter

for BWFS 100 system

Suitable for use with all of our equipment requiring connection to the mains water supply. Capacity is dependent on the hardness of the water in the local area (ca. 5,600 litres at 10 °dH). BWFS is not suitable for high volume machines and round filter equipment and alternatives are available.

Article number
7.094.911.101
Price
€65,50



Replacement filter

for BSRS 200 system

Suitable for use with all of our equipment requiring connection to the mains water supply. Capacity is dependent on the hardness of the water in the local area (ca. 1,600 litres at 10 °dH). BSRS is not suitable for high volume machines and round filter equipment and alternatives are available.

Article number
7.094.901.101
Price
€123,70

Milk fridges & coolers



7 litre milk container Esprecious

For FreshMilk. Transparent milk container. Volume 7 litres. Suitable for high demand. Holding capacity: 7 L

Article number
7.270.614.101
Price
€98,60

Payment systems



MDB service set

for Bolero series

Set, with interface that enables communication between the Bolero 11, 21, 32 or 43 and coin mechanisms. MDB service set is also required if a proprietary (coin) system is used.

Article number
7.270.124.101
Price
€158,50



MDB service kit

Esprecious 2.0

Set, containing an interface that allows the Esprecious to communicate with coin mechanisms. MDB service set is also required if a proprietary (coin) system is used. Does not apply to the Esprecious L versions.

Article number
7.270.603.101
Price
€181,40



MDB service set

Esprecious 2.5 / 3.0

Set, containing an interface that allows the Esprecious to communicate with coin mechanisms. MDB service set is also required if a proprietary (coin) system is used. Does not apply to the Esprecious L versions.

Article number
7.270.616.101
Price
€181,40



MDB service set

for Segò 12

Set, with interface that enables communication between the Segò and coin mechanisms. MDB service set is also required if a proprietary (coin) system is used.

Article number
7.270.615.101
Price
€150,20



Serviceset MDB

FreshBrew

Use this MDB service set to connect your coffee machine to a payment systems or telemetry.

Article number
7.290.317.101
Price
€89,00



MDB serviceset

Bolero Turbo

Extension to enable payment and connectivity solutions for any Bolero.

Article number

7.290.514.101

Price

€314,90



MDB cable for Segó L

MDB service set cable for Segó L.

Article number

7.270.636.101

Price

€19,00



Token for coin mechanisms

Bag of 100 pcs.

Article number

7.290.102.101

Price

€108,10

Round filter accessories



Anti-wave plate

(5 litres container)

For container.

Article number

7.110.209.101

Price

€36,00



Anti-wave plate

(10 litres container)

For container.

Article number

7.110.308.101

Price

€48,00



Anti-wave plate

(20 litres container)

For container.

Article number

7.110.408.101

Price

€70,30



Anti-wave plate

(40 litres container)

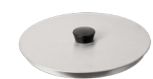
For container.

Article number

7.110.508.101

Price

€87,10



Container lid

V 5 + VG 5

Double walled.

Article number

7.110.212.101

Price

€137,00



Container lid

V 10 + VG 10

Double walled.

Article number

7.110.310.101

Price

€162,10



Container lid

VG 20

Double walled.

Article number

7.110.411.101

Price

€233,00



Container lid

VG 40

Double walled.

Article number

7.110.511.101

Price

€305,10



Container lid

VHG 5

Stainless steel.

Article number

7.110.211.501

Price

€54,60



Container lid

VHG 10

Container lid for VHG.

Article number

7.110.309.501

Price

€60,70



Container lid

VHG 20

Container lid for VHG.

Article number

7.110.410.501

Price

€87,10



Container lid

VHG 40

Container lid for VHG.

Article number

7.110.510.501

Price

€188,60



Fixation set

(for trolley or base plate, 4 pieces)

Container fixation set.

Article number

7.110.608.101

Price

€56,00



Fixing cams, 4 pieces

(for container)

Container fixation set.

Article number

7.110.609.101

Price

€19,40



Fixation set

B (HW) series

For B (HW) series. For table-top fixation of the base plate and drip tray.

Article number

7.110.613.501

Price

€65,50



Fixing bolts

B-series

3 pieces.

Article number

7.110.611.101

Price

€19,70



Lockable lid

B5 (HW)

For all containers. Synthetic material.

Article number

7.110.241.101

Price

€62,50



Lockable lid

B10 (HW)

For all containers. Synthetic material.

Article number

7.110.336.101

Price

€70,30



Lockable lid

B20 (HW)

For all containers. Synthetic material.

Article number

7.110.438.101

Price

€94,40



Mixer

for 5/10L container round filter machines

For container.

Article number

7.110.210.101

Price

€28,30



Mixer

for 20L container round filter machines

For container.

Article number

7.110.409.101

Price

€45,10



Mixer

for 40L container round filter machines

For container.

Article number

7.110.509.101

Price

€54,60



Quick tapping tube for round filter machines & RLX

filter machines & RLX

For filling cups and decanters.

Article number

7.110.620.101

Price

€137,00



Swivel outlet

For filling decanters, vacuum flasks and airpots from any of our round container dispense taps. Stainless steel.

Article number

7.093.100.101

Price

€155,00



Tip-up plate

(for 5 and 10 litre containers)

Wall mounting for container. Stainless steel.

Dimensions (WxDxH)

385x500x250mm

Article number

7.050.100.501

Price

€433,40



Tip-up plate

20/40 litres

Wall mounting for container. Stainless steel.

Dimensions (WxDxH)

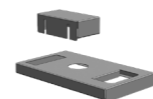
577x500x250mm

Article number

7.050.900.501

Price

€599,30



Wall console

B W 5/10

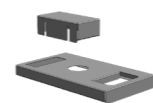
For brewing column. Stainless steel.

Article number

7.110.220.501

Price

€168,20



Wall console

B W 20/40 - B HW W 5/10/20

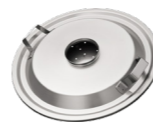
For brewing column. Stainless steel.

Article number

7.110.227.501

Price

€172,90



Water divider

for B5 (HW)

For filter pan.

Article number

7.110.204.501

Price

€84,80



Water divider

for B10 (HW)

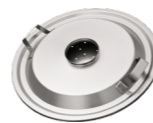
For filter pan.

Article number

7.110.304.501

Price

€113,50



Water divider

for B20 (HW)

For filter pan.

Article number

7.110.404.501

Price

€165,80



Water divider

for B40

For filter pan.

Article number

7.110.504.501

Price

€231,80



Drawer

For 10S, 20S and 30S. To be placed underneath the dishwasher tray (also in case of dishwasher tray spills).

Dimensions (WxDxH)

505x505x20mm

Article number

7.130.926.101

Price

€225,80



Parking bracket

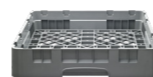
For fixation of the trolley.

Article number

7.110.621.101

Price

€36,00



Tray for dishwasher

(for cups and cutlery)

For 10S, 20S and 30S (PVC).

Dimensions (WxDxH)

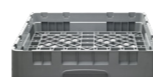
500x500x105mm

Article number

7.130.920.101

Price

€65,50



Tray for dishwasher

(for plates and saucers)

For 10S, 20S and 30S (PVC).

Dimensions (WxDxH)

500x500x105mm

Article number

7.130.921.101

Price

€91,40



Trolley 10S

Consisting of 2 side panels and 1 rear panel. With 4 rotary wheels, 2 fitted with brake. Fitted with a heightadjustable drip-tray up to 300 mm. Suitable for dishwasher trays 500x500 mm (not included). Stainless steel.

Dimensions (WxDxH)
615x700x850mm

Article number
7.011.301.201
Price
€1.203,30



Trolley 20S

Consisting of 2 side panels and 1 rear panel. With 4 rotary wheels, 2 fitted with brake. Fitted with a heightadjustable drip-tray up to 300 mm. Suitable for dishwasher trays 500x500 mm (not included). Stainless steel.

Dimensions (WxDxH)
615x700x985mm

Article number
7.011.701.201
Price
€1.278,90



Trolley 30S

With 2 side panels, back panel and lockable drawer. With 4 rotary wheels, 2 fitted with brake, fixing cams for a container and tip-up plate including bracket for rubbish bag. Suitable for dishwasher trays 500x500 mm and gastronorm trays (both not included).

Dimensions (WxDxH)
1000x700x985mm

Article number
7.012.101.201
Price
€2.400,50

Vacuum flasks & airpots



Glass decanter

1.7 litres. With tip-up lid.

Article number
7.170.602.101
Price
€22,10



Carton with 10 decanters

in boxes
1.7 litres. With tip-up lid.

Article number
7.170.602.102
Price
€198,20



Shatter proof decanter

Synthetic with stainless steel bottom. Including lid.

Article number
7.171.701.201
Price
€39,10



Stainless steel

decanter 1.7 L
With tip-up lid.

Article number
7.170.901.401
Price
€36,00



Stainless steel

decanter 2.2 L
With tip-up lid.

Article number
7.170.902.301
Price
€48,00



Vacuum flask

0.9L
Double walled, vacuum, with rotary lid and push button beverage dispense. Stainless steel.

Dimensions (DxH)
150x125mm

Article number
7.171.340.101
Price
€34,80



Vacuum flask

1L
Double walled, vacuum, with rotary lid and push button beverage dispense. Stainless steel.

Dimensions (DxH)
145x160mm

Article number
7.171.323.201
Price
€36,70



Vacuum flask

1L
Double walled, vacuum, with rotary lid and push button beverage dispense. Stainless steel.

Dimensions (DxH)
145x160mm

Article number
7.171.323.206
Price
€36,70



Vacuum flask

1.2L
Double walled, vacuum, with rotary lid and push button beverage dispense. Stainless steel.

Dimensions (DxH)
145x180mm

Article number
7.171.320.201
Price
€37,90



Vacuum flask

1.5L
Double walled, vacuum, with rotary lid and push button beverage dispense. Stainless steel.

Dimensions (DxH)
145x200mm

Article number
7.171.321.201
Price
€48,00



Vacuum flask

1.5L
Double walled, vacuum, with rotary lid and push button beverage dispense. Stainless steel.

Dimensions (DxH)
145x200mm

Article number
7.171.321.204
Price
€48,00



Vacuum flask

2L
Double walled, vacuum, with rotary lid and push button beverage dispense. Stainless steel.

Dimensions (DxH)
145x235mm

Article number
7.171.322.201
Price
€50,50



Vacuum flask

brew through 1L
Double walled, vacuum, with brew through lid. The vacuum flask can be placed underneath the coffee machine with the lid on top. Stainless steel.

Dimensions (DxH)
145x175mm

Article number
7.171.323.208
Price
€39,80



Vacuum flask

brew through 1.5L
Double walled, vacuum, with brew through lid. The vacuum flask can be placed underneath the coffee machine with the lid on top. Stainless steel.

Dimensions (DxH)
145x215mm

Article number
7.171.321.202
Price
€50,50



Vacuum flask

brew through 2L
Double walled, vacuum, with brew through lid. The vacuum flask can be placed underneath the coffee machine with the lid on top. Stainless steel.

Dimensions (DxH)
145x250mm

Article number
7.171.322.205
Price
€53,50



Airpot Furento

Glass inner-bowl
2.2 litres. With pump action.

Dimensions (DxH)
164x378mm

Article number
7.171.330.101
Price
€96,10



Airpot Furento
glass innerpot (black)
2.2 litres. With pump action.

Dimensions (DxH)
164x378mm

Article number
7.171.336.101
Price
€96,10



Airpot Furento
glass inner-bowl (red)
2.2 litres. With pump action.

Dimensions (DxH)
164x378mm

Article number
7.171.337.101
Price
€96,10



Airpot Furento
glass innerpot (blue)
2.2 litres. With pump action.

Dimensions (DxH)
164x378mm

Article number
7.171.338.101
Price
€96,10



Airpot Furento
stainless steel
2.2 litres. With pump action.

Dimensions (DxH)
164x378mm

Article number
7.171.331.101
Price
€107,60



Airpot Furento
green metallic
2.2 litres. With pump action.

Dimensions (DxH)
164x378mm

Article number
7.171.331.110
Price
€107,60



Airpot Furento
red metallic
2.2 litres. With pump action.

Dimensions (DxH)
164x378mm

Article number
7.171.331.113
Price
€107,60



Airpot Furento
black metallic
2.2 litres. With pump action.

Dimensions (DxH)
164x378mm

Article number
7.171.331.114
Price
€107,60



Qline S
Double walled stainless steel. The decanters have hinged lids and stainless steel grips.

Dimensions (DxH)
105x137mm

Article number
7.171.333.101
Price
€40,30



Qline M
Double walled stainless steel. The decanters have hinged lids and stainless steel grips.

Dimensions (DxH)
105x187mm

Article number
7.171.334.101
Price
€43,80



Qline L
Double walled stainless steel. The decanters have hinged lids and stainless steel grips.

Dimensions (DxH)
105x254mm

Article number
7.171.335.101
Price
€48,70



Airpot station
For 2 airpots and ingredients.

Dimensions (WxDxH)
615x325x155mm

Article number
7.211.005.201
Price
€128,50

Waste bins



Waste bin
for cabinet
Waste bin for cabinet.

Dimensions (WxDxH)
270x395x315mm

Article number
7.231.114.101
Price
€129,80



Waste bin
for pedestal Sego 12, 11L and 12L
For Sego 12, 11L and 12L with pedestal.

Article number
7.231.115.101
Price
€129,80



Waste bin
Sego 12, 11L/12L
For Sego 12, 11L and 12L.

Article number
7.231.116.101
Price
€32,40



Waste chute extension
for FreshOne, FreshOne G, FreshMore and FreshGround
For FreshOne / FreshMore / FreshGround. Stainless steel.

Article number
7.270.619.101
Price
€21,30



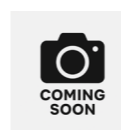
Waste chute extension XL
FreshMore XL and FreshGround XL
For FreshMore XL / FreshGround XL. Stainless steel.

Article number
7.270.629.101
Price
€21,30



Waste chute
for Esprecious
For use with a transit plate.

Article number
7.290.107.101
Price
€22,10



Waste chute
FreshBrew
Use for an external waste bin to create extra space for coffee residue below the machine.

Article number
7.290.320.101
Price
TBD

Hot plates



HP

With 2 hot plates.

Dimensions (WxDxH)

404x195x61mm

Rated power

100-240V~50/60Hz

140W(1700W)

Article number
8.010.010.31002

Price
€187,00

Other accessories



4 litre container

Sego L

For FreshMilk. Transparent milk container. Volume 4 litres. Suitable for high demand.

Holding capacity :4 L

Article number
7.270.637.101

Price
€71,00



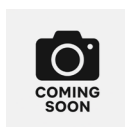
Cold water conversion kit

Bolero 11, 21, 32, 43

You can connect this cold water conversion kit to the Bolero 32 and 43 to serve hot and cold water.

Article number
7.270.215.101

Price
€193,40



Conversion kit cup detection

Bolero 32/43

The Bolero 32/43 cup detection conversion kit makes your Bolero machine suitable for automatic head detection.

Article number
7.270.127.101

Price
€253,00



Conversion set lock Esprecious

Set for Esprecious. Lock is at the left side of the Esprecious as standard. With this set you can change the positioning to the front.

Note: Requires drilling the machine housing. Please contact technical support before ordering.

Article number
7.270.613.101

Price
€21,30



Decanter rack

Mondo/Matic marine

For Mondo and Matic series. Suitable for stainless steel and glass decanters. Synthetic material.

Article number
7.092.602.201

Price
€48,00



Drainage set

Sego 12, 11L/12L

The Sego 12, 11L or 12L can be connected to a drain, but only by using the optional raiser set.

Article number
7.270.630.101

Price
€33,80



Extension set bean canister

Esprecious 11(L), 12 (2025)

Set containing extension for canister and lids (for both canister and machine) to increase the capacity of the bean canister.

Holding capacity :1 x 2.4 kg

Article number
7.270.638.101

Price
€232,30



Extension set bean canister

Esprecious 21 (L), 22 (2x1.2 kg) (2025)

Set containing extension for canister and lids (for both canister and machine) to increase the capacity of the bean canister. Divided bean canister: 2 x 1.2 kg. Holding capacity :2 x 1.2 kg

Article number
7.270.639.101

Price
€237,50



Fan cover

Fits all instant ingredient ventilators from Bravilor Bonamat. Diverts the air current backwards or downwards.

Article number
7.270.631.101

Price
€23,30



Fixation set

for Novo/Iso

For table-top fixation of the machine.

Article number
7.092.642.101

Price
€34,30



Fixation set

for TH(α)-series

For table-top fixation of the machine.

Article number
7.092.643.101

Price
€37,40



Marine fixation set

Mondo/Matic marine

For Mondo and Matic series. For table-top fixation of the machine.

Article number
7.092.644.101

Price
€34,30



Flojet

For use with machines with water connection at locations where mains water supply is not available. For use in combination with bottled water. Suction-pipe and connection hose included. Without flask-empty signal. Throughput: 1,9 litres per minute.

Rated power
230V~ 50/60Hz 60W

Article number
7.270.103.101

Price
€342,40



Ingredient box

Ingredient box with 5 compartments for ingredients and supplements like sugar, milk or spoons.

Dimensions (WxDxH)
343x144x63mm

Article number
7.230.103.152

Price
€22,10



Ingredient box

(Carton with 10 pieces)

Ingredient box with 5 compartments for ingredients and supplements like sugar, milk or spoons.

Dimensions (WxDxH)
343x144x63mm

Article number
7.230.103.102

Price
€211,50



Lid

HWA 6(D)

Lid for HWA 6.

Article number
7.093.250.101

Price
€50,50



Lid

HWA 14(D), 21

Lid for HWA 14 and 21.

Article number
7.093.251.101

Price
€64,30



Measuring jug

2.2 litres.

Article number
7.094.305.101

Price
€16,30



Measuring spoon

Contents ca. 40 grams.

Article number
7.094.100.101

Price
€1,50



Pump set

For use at locations where mains water supply is not available. To be used in combination with bottled water. Connection hose and electrical wiring included. Without flask-empty signal.

Article number
7.270.701.101

Price
€159,80

COFFEE

Sticker Coffee

Adhesive label to place on any container.

Article number
7.210.102.101

Price
€4,50

HOT WATER

Sticker Hot Water

Adhesive label to place on any container.

Article number
7.210.105.101

Price
€4,50

TEA

Sticker Tea

Adhesive label to place on any container.

Article number
7.210.101.101

Price
€4,50



Water connection set

SPRSO

The SPRSO can be connected to the water mains with this water tank.

Article number
7.270.901.101

Price
€164,60

DELIVERY

Ex works Heerhugowaard, Holland. Inclusive standard packing.

PAYMENT

Within 30 days after date of invoice net or against irrevocable L/C, or payment in advance.

GUARANTEE

One year on electrical and mechanical parts.

CLAIMS

Returning of defective parts to our works ,free domicile', stating machine- and type number.

No guarantee on frozen and scaled parts. Guarantee on parts only; no guarantee on labour and travelling expenses!

ORDERS

All orders with a net value less than € 300.00 will be raised by € 20.00 administration costs.

For shipping to third parties additional costs may be charged. For those customers who purchase machines and parts with payment by L/C or those whose invoices have to be legalized by the Chamber of Commerce and Embassy or Consulate, an amount of € 300.00 will be added to the invoice in case the net value of the order is under € 7,500.00.

Orders shall be binding upon the client. Bravilor Bonamat shall only be bound by sending the order confirmation. If the client has not informed Bravilor Bonamat of his objections within ten days of dispatch of the order confirmation, the order confirmation shall be deemed to be a correct and full representation of the agreement.

All orders by the client must state the item numbers used by Bravilor Bonamat. Erroneous deliveries and all the financial consequences of not stating or incorrectly stating these item numbers shall be borne by the client.

Alterations reserved.

**The private limited liability company
BRAVILOR BONAMAT BV,
established in Heerhugowaard, the Netherlands
hereinafter referred to as Bravilor Bonamat.**

1. GENERAL

- 1.1 These General Conditions will apply to all applications for, offers and quotations to, and Agreements with Clients, unless the Client and Bravilor Bonamat have expressly agreed otherwise in writing. Any purchase and/or other (general) conditions of the Client are hereby expressly waived and will not be applicable.
- 1.2 The Client acknowledges the applicability of these General Conditions by the mere fact of giving an assignment, of any nature whatsoever, to Bravilor Bonamat, unless the conditions have been expressly rejected by the Client in writing; the Client's mere reference to its own conditions or a standard clause on its letterhead paper or in its own conditions, including the exclusive effect of the Client's own conditions, will, in this respect, not suffice.
- 1.3 If, in respect of certain subjects, provided for in these General Conditions, derogations have been agreed on, these General Conditions will continue to apply to the remaining subjects of such Agreement. In no event will any agreed derogations be applicable to more than one assignment, unless confirmed in writing on each occasion.
- 1.4 Any conditions, stipulations, etc., agreed with agents, representatives or other intermediaries, derogating from these General Conditions will only be binding on Bravilor Bonamat if and to the extent expressly confirmed by it in writing.

2. QUOTATIONS

- 2.1 Offers and quotations from Bravilor Bonamat will be fully subject to contract and may be revoked by Bravilor Bonamat at any time prior to formation of the Agreement.
- 2.2 In the event of composite quotations, there is no obligation to deliver part of the order at a corresponding part of the total price quoted.
- 2.3 All prices quoted by Bravilor Bonamat will be exclusive of VAT, costs for any necessary or required additional packaging, any additional costs for the dispatch of goods, and/or other taxes, charges or rights encumbering the goods as such, unless expressly otherwise stated in the order confirmation.
- 2.4 All goods offered will, in addition to what is stated in that respect in the catalogues and brochures, be subject to the normal and/or customary tolerances; in particular a reservation is made in respect of nuances in the stated colours of goods. Minor derogations of images and/or descriptions included in the catalogues and brochures will, therefore, be

expressly reserved. In no event will such derogations discharge the Client from its obligations under the Agreement.

- 2.5 The prices in the quotations will be solely applicable to the specified quantities.
- 2.6 Any changes in prices quoted, without prior notice and even after sending the order confirmation, will be expressly reserved; for example, Bravilor Bonamat will be entitled, after formation of the Agreement and before full delivery has taken place, to pass on to the Client any increases in the costs of commodities, wages, employer's social security charges and/or other terms of employment, as well as any increases of other rates, rights, charges, levies and taxes, as well as any change in exchange rates, causing an increase in costs for Bravilor Bonamat.
- 2.7 The models, pictures, drawings and dimensions accompanying, or shown or communicated in, the quotations will only contain a general presentation of the goods offered. Structural modifications, resulting in a slight derogation of the actual design of the models, pictures, drawings or dimensions referred to, but not leading to an essential alteration of the technical and aesthetic design of the goods, will not impose any obligation on Bravilor Bonamat to pay any compensation or whatsoever and will not entitle the Client to refuse receipt or payment of the goods delivered.
- 2.8 In no event, unless stated otherwise in writing, will the prices quoted include any fitting, connection or installation work.
- 2.9 Arrangements with staff members will not be binding on Bravilor Bonamat, unless confirmed by it in writing.

3. ASSIGNMENTS

- 3.1 An order or assignment will be binding on the Client. Bravilor Bonamat will not be bound until after dispatch of a written confirmation of the order or assignment. If the Client fails to make its objections known to Bravilor Bonamat within ten days of dispatch of the confirmation, the order confirmation will be deemed to reflect the Agreement correctly and fully.
- 3.2 The Client is to state the item numbers used by Bravilor Bonamat on all assignments. Incorrect deliveries and all financial consequences thereof as a result of omitting to state, or the incorrect stating of, such item numbers will be at the Client's expense.
- 3.3 For assignments with a net invoice value which is lower than an amount to be determined by Bravilor Bonamat, as reflected in the applicable current price lists, an amount for order handling costs to be determined by Bravilor Bonamat will be charged to the Client.
- 3.4 Any changes in the design of an assignment required by the Client after having given such assignment must

be communicated by the Client to Bravilor Bonamat in good time and in writing. If stated orally or by telephone, the risk of the implementation of any such change will be at the Client's expense, unless the changes have been confirmed in writing by Bravilor Bonamat.

- 3.5 In the event of full or partial cancellation of the assignment given by the Client, it will be under an obligation to compensate Bravilor Bonamat for all costs reasonably incurred in view of the performance of this assignment (costs of design, drawing, calculation, preparation, storage commission, etc.). If so required by Bravilor Bonamat, the Client will also be under an obligation to compensate any loss of profits, as well as any damage ensuing from such cancellation.
- 3.6 Any written or oral changes to the original assignment, of any nature whatsoever, made by or on behalf of the Client, that lead to higher costs than could be anticipated at the time of the quotation and/or the order confirmation, will be charged to the Client as additional costs.
- 3.7 Any changes and/or cancellations of orders made or assignments given will not be binding on Bravilor Bonamat until after written acceptance.
- 3.8 If the Client fails to strictly perform any obligation ensuing from an Agreement with Bravilor Bonamat, Bravilor Bonamat will be entitled, after having given the Client written notice of default in that respect and after having given the Client the opportunity still to perform the obligation within a reasonable period of time, to suspend performance of all obligations vis-à-vis the Client or to dissolve all Agreements with the Client in full or in part, while reserving its right to damages and without any judicial intervention being required. All and any amounts due by the Client to Bravilor Bonamat will become immediately due and payable.

4. DELIVERY PERIODS

- 4.1 All delivery periods stated by Bravilor Bonamat will be estimates only and will not be binding.
- 4.2 The delivery period will commence on the date of receipt of the assignment stated in the order confirmation and/or if all and any data, drawings and materials required in the opinion of Bravilor Bonamat have been provided to it by the Client.
- 4.3 Bravilor Bonamat will not be responsible for any stoppage or delay, unless caused by its fault, all without prejudice to the provisions below.
- 4.4 The assignment will be performed within the customary, applicable time. If an assignment needs to be expedited, costs of overtime and/or other additional costs incurred, if any, may be charged to the Client. The Client will allow Bravilor

Bonamat some room for negotiation in respect of the performance time. The delivery period will be an irrevocable and firm deadline only if, when giving the assignment, the Client notified Bravilor Bonamat in writing of the consequences of any delay and this has been confirmed in writing by Bravilor Bonamat.

- 4.5 Any disruptions within the business due to force majeure (which will include war; mobilisation; riots; flooding; blocked shipping and other obstructions in transport; a standstill in, or restrictions or discontinuation of, the deliveries by public utility companies; shortage of coal or other fuels; fire; breakdown of machinery and other incidents; strikes; lockouts; acts of unions as a result of which production becomes impossible; government measures; failure to deliver any required materials and semi-finished products to Bravilor Bonamat by third parties; and other unforeseen circumstances; also in the country of origin of the materials and/or semi-finished products, disrupting the normal course of business and delaying the performance of an assignment or rendering such performance reasonably impossible) will discharge Bravilor Bonamat from compliance with the agreed period or with the duty to perform, without the Client being able to claim any right or compensation of costs, damage or interests.
- 4.6 In the event of force majeure, Bravilor Bonamat will notify the Client forthwith. If, from the said notification, the force majeure has lasted longer than 8 weeks, the Client will be entitled to cancel the assignment in writing, albeit subject to the obligation to compensate Bravilor Bonamat for the part of the assignment already performed.
- 4.7 In no event will late delivery discharge the Client from its obligations under the Agreement or entitle the Client to claim dissolution of the Agreement and/or damages.
- 4.8 If the delivery period is exceeded to such an extent that the Client cannot reasonably be required to maintain the Agreement, the Client will, however, be entitled to cancel the relevant assignment, provided that it notifies Bravilor Bonamat thereof in writing, without prejudice to the right of Bravilor Bonamat still to deliver the relevant goods within 4 weeks of receipt of the said notification. The Client may claim that Bravilor Bonamat communicate forthwith whether or not it wishes to avail itself of such right.
- Delivery period and late delivery by the Client**
- 4.9 Any agreed delivery periods will apply only if and to the extent the materials to be processed and to be supplied by the Client, as well as any data required for the performance of the assignment, are delivered to Bravilor Bonamat in good time.
- 4.10 The Client will be responsible for the timely delivery of

the materials to be processed, as well as for the data required for the performance of the assignment.

- 4.11** In the event of late delivery by the Client, Bravilor Bonamat will be entitled to set a further date for performance of the assignment.
- 4.12** If, due to the late delivery by the Client, the manufacturing/assembly can only be carried out by engaging extra transport, overtime work, express delivery, etc., Bravilor Bonamat will, without any previous consultations with the Client being required, be entitled to do so, and any costs arisen as a result will be borne by the Client.
- 4.13** If the progress in the performance of the work is delayed by the Client or by force majeure occurring on its part, Bravilor Bonamat may, on the dates on which it could have disposed of the goods had no delay occurred, dispose of a part of the price quoted for the entire delivery, proportionally and in relation to the finished part, as well as of any further costs incurred for the entire delivery, all to be increased by the customary custody fee in respect of the materials stored on the instructions of the Client.
- 4.14** Should these periods not be expressly agreed on in advance, the foregoing may be disposed of immediately after lapse of the time required for finishing of the relevant work.

5. DELIVERY AND PERFORMANCE

Delivery period and late delivery by Bravilor Bonamat

- 5.1** All deliveries will be Ex Works (Incoterms 2010) Bravilor Bonamat facility in Heerhugowaard (the Netherlands) and will be deemed to have taken place at such time as the products to be supplied leave the Bravilor Bonamat facility in Heerhugowaard (the Netherlands) or on the date on which Bravilor Bonamat notifies the Client that the products ordered by it are at its disposal.
- 5.2** All deliveries will be deemed to take place in Heerhugowaard (the Netherlands); all payments must be effected there.
- 5.3** As soon as the Client has been notified that the goods ordered by it are available to it, it is to take delivery of such goods within ten days, failing which Bravilor Bonamat will be entitled to charge storage costs to the Client or to dissolve the Agreement subject to retention of its right to damages.
- 5.4** From the moment on which delivery has formally taken place, all damage to the goods will be at the Client's expense.
- 5.5** Each partial delivery, which will include delivery of parts of a composite assignment, may be invoiced, in which event such partial delivery will be regarded as a stand-alone transaction; in such event payment is to be effected in accordance with article 13 "PAYMENT".

- 5.6** Delivery by Bravilor Bonamat will at all times be Ex Works (Incoterms 2010) Bravilor Bonamat facility in Heerhugowaard, save in those cases in which the total amount involved in the assignment justifies delivery DDP (Incoterms 2010), all at the sole discretion of Bravilor Bonamat.
- 5.7** In the event of delivery DDP (Incoterms 2010), the cheapest method of shipment will be used, unless agreed otherwise in advance. In the event of a derogating method of shipment, any additional costs incurred will be borne by the Client.
- 5.8** Accepting the goods by a carrier, without a note on the consignment note or the receipt, will serve as proof that the packaging was in good condition. Delivery or performance of the assignment by the Client
- 5.9** In the event of delivery of materials, lettering, stickers, etc. by the Client, Bravilor Bonamat will, save in the event of debt or intent on the part of Bravilor Bonamat, not be liable for the unavailability of sufficient quantities in the crates, boxes or packages sent.
- 5.10** Any material, lettering, stickers, etc., to be processed by Bravilor Bonamat are to be delivered DDP (Incoterms 2010) and in good time at the address stated by it. In the event of delivery DDU (Incoterms 2010), the freight costs incurred will be charged to the Client, without prejudice to the right of Bravilor Bonamat to refuse a DDU shipment (Incoterms 2010).
- 5.11** If Bravilor Bonamat is in the possession of goods belonging to the Client, it will be entitled to retain those goods until the Client has fully paid all costs incurred by Bravilor Bonamat for purposes of performance of assignments of that particular Client, irrespective of whether such assignments relate to the said or to other goods of the Client, unless the Client has provided sufficient security for such costs. Bravilor Bonamat will also have such right of retention in the event of the Client's bankruptcy.

6. LIABILITY

- 6.1** Bravilor Bonamat will not accept any responsibility whatsoever for defects caused by the goods delivered due to fault or action of the Client or third parties, or due to external causes.
- 6.2** Bravilor Bonamat will not have any obligations further to those ensuing from this article; in particular, in no event will Bravilor Bonamat be liable for any direct or indirect loss of profits which may arise due to failure to perform the assignment or to incorrect or untimely performance of the assignment.
- 6.3** To the extent permitted by law, Bravilor Bonamat will not have any liability for any damage, howsoever named or caused, other than damage caused by intent or gross negligence on its part, to be proven

by the Client and not exceeding the maximum of the amount of services or deliveries, or a proportional part thereof, to be carried out by Bravilor Bonamat.

- 6.4** To the extent permitted by law, Bravilor Bonamat will not accept any liability for any indirect or consequential damage (e.g. lost turnover, loss owing to stoppage and/or lost profits).
- 6.5** All claims from the Client for damages are to be reported to Bravilor Bonamat in writing within 4 weeks of the arising of such damage, all on pain of lapse of such claims.
- 6.6** In no event will Bravilor Bonamat accept any liability for damage arisen due to negligent or careless use, or due to use contrary to the operating instructions of the goods delivered or to the unsuitability of the goods delivered for the purpose for which the Client has purchased and/or used them.
- 6.7** To the extent permitted by law, the Client will be under an obligation to indemnify Bravilor Bonamat, and to hold and keep Bravilor Bonamat harmless, against all and any claims for damages instituted by third parties against Bravilor Bonamat in respect of damage arisen by or with the equipment supplied.
- 6.8** If an assignment to deliver goods or perform services is given for the account of two or more private individuals or legal entities, these individuals or entities will, each individually, be jointly and severally liable for the full performance of the ad hoc obligation ensuing from the Agreement.
- 6.9** Bravilor Bonamat undertakes to take proper care of the materials supplied by the Client for purposes of processing, as well as of the drawings/designs received from the Client, but it will not accept any liability whatsoever for loss due to fire, theft or breakage, etc., to the extent not covered by the insurance.
- 6.10** Bravilor Bonamat will not be liable for any inaccuracies in the statements of shipments, duties and expenses by third parties to Bravilor Bonamat.
- 6.11** Furthermore, Bravilor Bonamat will not be liable if incorrect freight costs and duties have been levied. The Client will be responsible for any ensuing claims and additional levies.
- 6.12** Bravilor Bonamat will give advice to the best of its knowledge and in good faith; it will, however, not accept any liability for any loss or damage ensuing directly or indirectly from the substance of the advice given by it.

7. PRODUCT LIABILITY

- 7.1** To prevent any incorrect and/or careless use of products supplied by Bravilor Bonamat, the Client will, if acting in the exercise of a profession or business and if selling, letting, leasing the product supplied by Bravilor Bonamat, or otherwise making

such product available to third parties for purposes of its operations, be under an obligation to make a proper and clear product description and use manual available to its respective other contracting parties.

- 7.2** If the Client makes the products supplied by Bravilor Bonamat available to the buyers as referred to in article 7.1 rather than to the end user, it will be under an obligation to include the same clauses as stated in this chapter in the Agreement(s) with such buyer(s).
- 7.3** If and to the extent, pursuant to product liability as referred to the EU directive of 25 July 1985 (OJEC no. L 210), Bravilor Bonamat is under an obligation to compensate damage arisen as a result of or caused by a defective product manufactured, supplied or imported by it into the EU, it will be entitled fully to recover such damage from the Client, if the latter has failed to perform the provisions of articles 7.1 and 7.2.
- 7.4** If the Client has performed the provisions of articles 7.1 and 7.2, all parties, i.e. Bravilor Bonamat as well as each subsequent supplier, lessor, etc., as referred to in articles 7.1 and 7.2, will be under an obligation to compensate equal parts of the damage.
- 7.5** If Bravilor Bonamat is held liable, pursuant to the product liability, for compensation of the full damage and Bravilor Bonamat is forced to honour such claim, it will, in accordance with article 7.4, have recourse against each of the subsequent buyers/ suppliers, as referred to in articles 7.1 and 7.2.
- 7.6** In the event that the claim for compensation of product damage aimed against Bravilor Bonamat is governed by the laws of a EU Member State, which has used the limitation option of Article 16 (1) of the EU Directive of 25 July 1985 (OJEC no. L 210), Bravilor Bonamat will, should a contracting party act pursuant to liability, waive all and any liability or obligation for compensation of product damage exceeding the relevant limit.

8. COMPLAINTS AND WARRANTY

- 8.1** Bravilor Bonamat will neither be liable for misprints, clerical errors and/or miscalculations and/or ambiguities in quotations, order confirmations and/or prospectuses, nor for the consequences thereof. In the event of inconsistencies in quotations, order confirmations or prospectuses, the explanation given by Bravilor Bonamat will be binding.
- 8.2** Any defects in part of the goods supplied will not entitle [the Client] to reject the entire delivery.
- 8.3** Bravilor Bonamat must be notified in writing or electronically of any complaints regarding defects in the goods no later than within eight days of their arrival at the place of destination.
- 8.4** Bravilor Bonamat must be notified of any defects that could not have been reasonably identified within the period stated in the previous article immediately upon

their discovery, but not later than ninety days after receipt of the goods, immediately discontinuing the use of the relevant goods.

- 8.5** The Client will render all cooperation required by Bravilor Bonamat for investigation of the complaint, inter alia, by supplying sample material and/or by giving Bravilor Bonamat the opportunity to initiate an on-the-spot investigation into the quality and/or quantity of the services provided.
- 8.6** If Bravilor Bonamat deems a defect in the products delivered demonstrated, it may, at its option, remedy the identified defect; resupply the goods that proved defective; or grant the Client a discount on the purchase price to be established in mutual consultation. In the first case, the Client will return the goods that are considered defective to Bravilor Bonamat at the latter's request.
- 8.7** In the event of resupply, the benefit of the goods supplied that the Client or its buyer has meanwhile had will be taken into account, charging a fair compensation to the Client in respect thereof.
- 8.8** Complaints in respect of certain shipments will not suspend the Client's payment obligation in respect of that particular or another supplies.
- 8.9** Warranty will only be given in respect of goods that have been fully paid to Bravilor Bonamat and for a maximum period of 1 year.
- 8.10** The warranty period will take effect on the date on which the delivery is formally deemed to have taken place, as indicated in article 5.1.
- 8.11** If, while giving service, the warranty is invoked, the Client must state the type number, machine number and date of delivery. In addition, obtaining any form of compensation will require a service report and the defective part must, if possible, be returned to Bravilor Bonamat.
- 8.12** If Bravilor Bonamat replaces parts in order to perform its warranty obligation, title to the replaced parts will be transferred to Bravilor Bonamat.
- 8.13** In the event of a repair, the replaced parts will be covered by the warranty only if it is established that the defect or failure is due to an omission on the part of Bravilor Bonamat and the warranty period has not lapsed. In no event will any call-out charges or labour costs charged to the Client be compensated.
- 8.14** The correct operation of the machines supplied by Bravilor Bonamat will be guaranteed only if the rules and conditions for proper and safe operation thereof, as stated in the information on the machines, are complied with.
- 8.15** The warranty will lapse if:
- the installation, user and/or maintenance instructions are not followed;
 - the Client has entrusted the maintenance or the repair, or the set-up or relocation, as applicable,

to third parties, unless such third parties have been appointed for that purpose by Bravilor Bonamat;

- damage to and/or defects in the construction of the equipment have arisen due to fault, intent, carelessness and/or negligence on the part of the Client and/or third parties;
 - the Client has treated or processed, or caused third parties to treat or process, the machines supplied, without having obtained the consent of Bravilor Bonamat.
- 8.16** Whether a certain defect or failure is covered by the conditions of the warranty described above will be solely at the discretion of Bravilor Bonamat.
- 8.17** Any derogations in respect of the warranty provisions described above will be valid only if confirmed in writing by Bravilor Bonamat.
- 8.18** No complaints may be lodged in respect of externally visible damage, such as scratches, dents, etc., except immediately upon delivery as referred to in article 8.3.
- 8.19** In no event, neither during or after the warranty period, will the Client be able to seek dissolution of an Agreement pursuant to complaints or defects.

9. RETURN SHIPMENT

- 9.1** Bravilor Bonamat will not accept any return shipments, unless such shipments have been discussed in advance with the account manager/contact person at Bravilor Bonamat's and they have communicated in writing that they will accept the goods to be returned.
- 9.2** The provisions of article 9.1 above will equally apply to goods taken delivery of; therefore, the mere taking delivery of goods at the warehouse of Bravilor Bonamat and/or by its employees will not be deemed to constitute acceptance.
- 9.3** Goods that have been incorrectly returned will remain at the disposal and risk of the Client; any transport and/or storage costs will be borne by the Client. The above will fully apply to return shipments that turn out to be the subject of unfounded complaints.
- 9.4** Return shipments accepted in accordance with the provisions of article 9.1 must carry a return number to be stated by Bravilor Bonamat in advance, a Bonamat item number as well as the date of delivery or of the invoice, as applicable. Furthermore, the reason for the return shipment as well as the name of the contact at the Client's must be stated. Return shipments must take place in their undamaged original packaging.
- 9.5** In respect of all return shipments accepted in accordance with the provisions of article 9.01 Bravilor Bonamat will, save in the event that Bravilor Bonamat has sent the wrong goods to the Client, charge the Client with 10% of the net invoiced value with a minimum of 12.50.

10. TRANSFER AND RETENTION OF TITLE

- 10.1** Notwithstanding the actual delivery, title to the goods to be supplied will not pass to the Client until after it has performed all the following obligations from all Agreements entered into with Bravilor Bonamat:
- the consideration(s) with respect to the goods delivered themselves;
 - the consideration(s) with respect to the services provided or to be provided by Bravilor Bonamat pursuant to the Agreement(s);
 - any claims on account of non-compliance by the Client of any Agreement(s).
- 10.2** In respect of the goods referred to in article 10.1 Bravilor Bonamat will, to the extent possible, also retain co-ownership as security of all its outstanding claims vis-à-vis the Client, if such goods have been treated or processed or, failing such payment, would no longer be owned by Bravilor Bonamat due to any acts of the Client.
- 10.3** The Client will, until further notice, be authorised to sell and supply the goods delivered to third parties for purposes of its normal business operations, provided that it will, on Bravilor Bonamat's demand, assign the claims obtained from these sales vis-à-vis its buyers to Bravilor Bonamat. The Client hereby irrevocably authorises Bravilor Bonamat to collect the relevant claim(s).
- 10.4** As long as title to the goods supplied as set forth in article 10.1 has not passed to the Client, the Client may not, and cannot, establish any rights of pledge of any nature whatsoever on such goods, whereas the Client may not, and cannot, have the goods serve as security for any third-party claim.
- 10.5** Bravilor Bonamat will at all times be entitled to remove, or cause third parties to remove, the goods supplied from the Client or its holders, if the Client fails to perform its obligations vis-à-vis Bravilor Bonamat. To that end, the Client is to render its cooperation on pain of a penalty of 1,000.00 for each day that it remains in default.
- ## 11. RIGHTS OF INTELLECTUAL PROPERTY
- 11.1** By placing an order for the manufacture/assembly, reproduction or replication of any objects protected by 11. copyright laws or any industrial property right, the Client declares that no copyright or industrial property rights of third parties are infringed and the Client indemnifies Bravilor Bonamat, in and out of court, against all, both financial and other consequences, ensuing from the manufacture/assembly, reproduction or replication.
- 11.2** All rights of an industrial or intellectual nature, such as patent rights, in respect of products supplied by Bravilor Bonamat or parts thereof, will, both during and after performance of the assignment,

be (and continue to be) the inalienable property of Bravilor Bonamat. The exercise of these rights, including publication or transfer of technical data, will be expressly and exclusively reserved to Bravilor Bonamat, both during and after performance of the assignment. The Client may not, in any way whatsoever and against payment or otherwise, make these data available to third parties or act, or fail to act, in any other way whatsoever in order to ensure that third parties can dispose of such data.

12. LOAN AND CONSIGNMENT

- 12.1** Goods and/or advertising material given on consignment will in all circumstances remain the inalienable property of Bravilor Bonamat.
- 12.2** Bravilor Bonamat will at all times be entitled to terminate the consignment and to repossess the goods given on consignment.
- 12.3** In the event of damage to or loss of goods given on consignment, the Client will be under an obligation to report this to Bravilor Bonamat forthwith. In the event of damage or loss, Bravilor Bonamat will be entitled fully to charge the Client for the damaged or lost goods.
- 12.4** During the period of consignment, the Client will be under an obligation to give Bravilor Bonamat, on the latter's demand and during office hours, access to the room(s) where the goods given on consignment are located, in order to inspect or maintain such goods.
- 12.5** If goods have been supplied on consignment in consultation with the Client to allow the Client to assess whether such goods fit the application devised by the Client, articles 12.1 to 12.4 will fully apply, in which event, after a period agreed with the Client in writing or after a period of one calendar month after the formal delivery in accordance with article 5.1, Bravilor Bonamat will be entitled to transfer title to the goods delivered by requiring the Client to perform its obligations for acquiring title to the relevant goods.

13. PAYMENT

- 13.1** If the performance of an assignment extends over a period longer than 1 (one) month, or if, in Bravilor Bonamat's opinion, the amount involved in the assignment is eligible, it may require payment, prepayment or payment in instalments.
- 13.2** Bravilor Bonamat will, irrespective of the agreed payment conditions, be entitled to require sufficient security for payment or require such security during performance of an agreement.
- 13.3** All payments are to be effected within the period stated in the invoice or, in the absence thereof, within a period of thirty days from the date of the invoice or of the date of delivery stated in the invoice, net and in cash without any deduction, in AUD.



Bravilor Bonamat BV

Visitors' address

Pascalstraat 20
1704 RD Heerhugowaard
The Netherlands

sales@bravilor.com

+31 (0)72 575 1751

Postal address

PO Box 188
1700 AD Heerhugowaard
The Netherlands

www.bravilor.com

2026